

WAAS CH <b>82399</b> <b>W33A</b>	APCH CRS <b>330°</b>	Rwy ldg TDZE Arpt Elev <b>9806</b> <b>995</b> <b>1015</b>
--	-------------------------	--

AL-906 [USA]

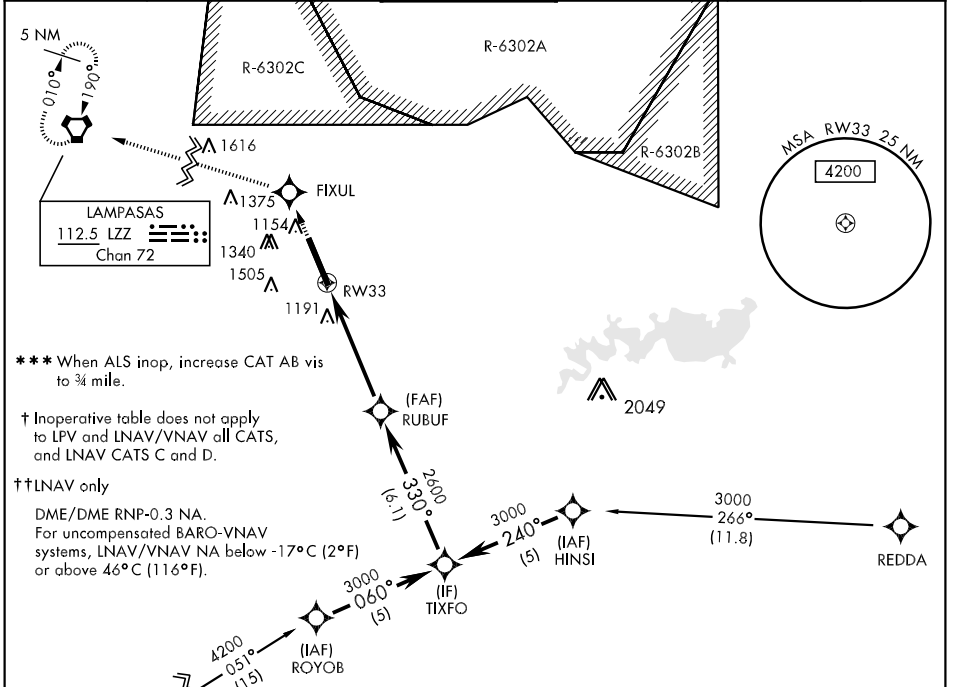
ROBERT GRAY AAF (KGRK)

**▲** \* When ALS inop, increase LNAV CAT AB vis to 1 mile and Cat E vis to 1 3/4 miles.  
\*\* Circling NA west of Rwy 15-33



MISSED APPROACH: Climb to 3000 direct FIXUL and via 280° track to LZZ VORTAC and hold.

ATIS <b>124.9</b>	GRAY APP CON <b>120.075 323.15</b>	GRAY TOWER <b>120.75 285.5</b>	GND CON <b>126.2 279.5</b>	CLNC DEL <b>121.8 251.1</b>	ASR/PAR
----------------------	---------------------------------------	-----------------------------------	-------------------------------	--------------------------------	---------



\*\*\* When ALS inop, increase CAT AB vis to 3/4 mile.

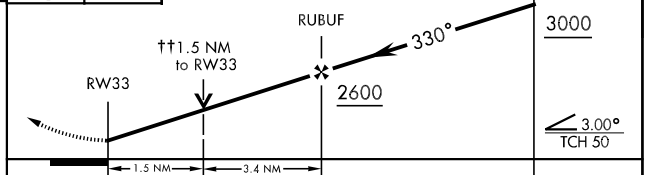
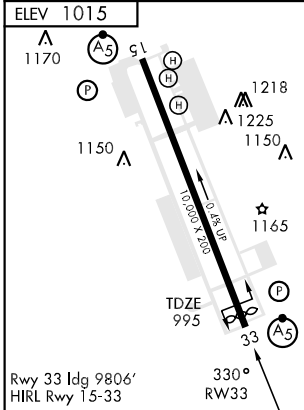
† Inoperative table does not apply to LPV and LNAV/VNAV all CATS, and LNAV CATS C and D.

†† LNAV only

DME/DME RNP-0.3 NA.  
For uncompensated BARO-VNAV systems, LNAV/VNAV NA below -17°C (2°F) or above 46°C (116°F).

SC-3, 22 OCT 2009 to 19 NOV 2009

SC-3, 22 OCT 2009 to 19 NOV 2009



CATEGORY	A	B	C	D	E
LPV DA †	1245-1		250	(300-1)	
LNAV/VNAV DA †	1553-2		558	(600-2)	
LNAV MDA * †	1460-3/4	465 (500-3/4)	1460-1 1/4 465 (500-1 1/4)	1460-1 1/2	465 (500-1 1/2)
CIRCLING **	1520-2	505 (600-2)	1560-2 545 (600-2)	1580-2	1680-2 1/4 665 (700-2 1/4)
S-PAR 33 ***	1187-1/2	200 (200-1/2)	1187-3/4	200 (200-3/4)	GS 3.0°