

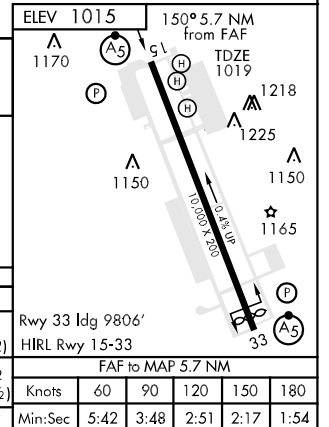
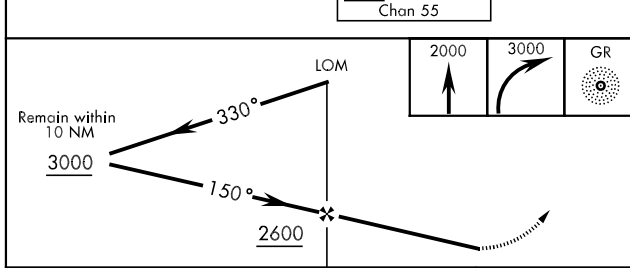
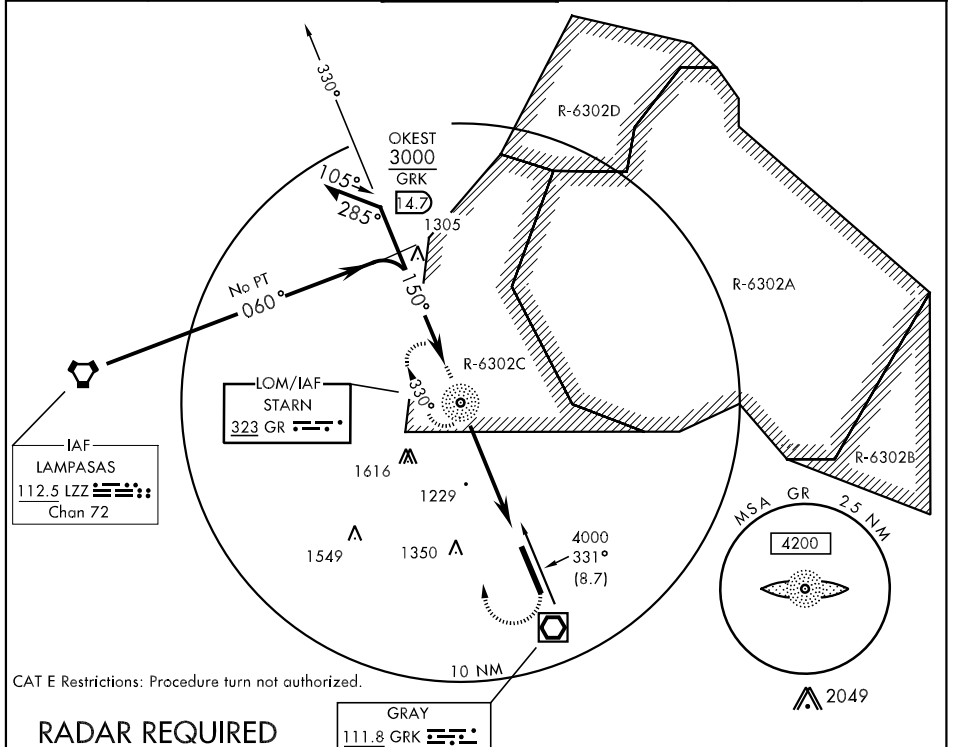
LOM GR 323	APCH CRS 150°	Rwy ldg 10,000 TDZE 1019 Arpt Elev 1015
----------------------	-------------------------	--

AL-906 [USA]

ROBERT GRAY AAF (KGRK)

▽	* Circling not authorized W of Rwy 15-33.	MALSR 	MISSED APPROACH: Climb to 2000 then climbing right turn to 3000 direct GR LOM and hold.
▲ NA	** When ALS inop, increase CAT AB RVR to 40.	A5	

ATIS 124.9	GRAY APP CON 120.075 323.15	GRAY TOWER 120.75 285.5	GND CON 126.2 279.5	CLNC DEL 121.8 251.1	ASR/PAR
----------------------	---------------------------------------	-----------------------------------	-------------------------------	--------------------------------	---------



CATEGORY	A	B	C	D	E
S-15	1660/40 641 (700-¾)		1660-1½ 641 (700-1½)	1660-1¾ 641 (700-1¾)	1660-2 641 (700-2)
CIRCLING *	1660-1 641 (700-1)		1660-1¾ 641 (700-1¾)	1660-2 641 (700-2)	1740-2½ 721 (800-2½)
S-PAR 15**	1219/24 200 (200-½)		1219/40 200 (200-¾)	GS 3.0°	

SC-3, 22 OCT 2009 to 19 NOV 2009

SC-3, 22 OCT 2009 to 19 NOV 2009