

RNAV (GPS) Y RWY 5

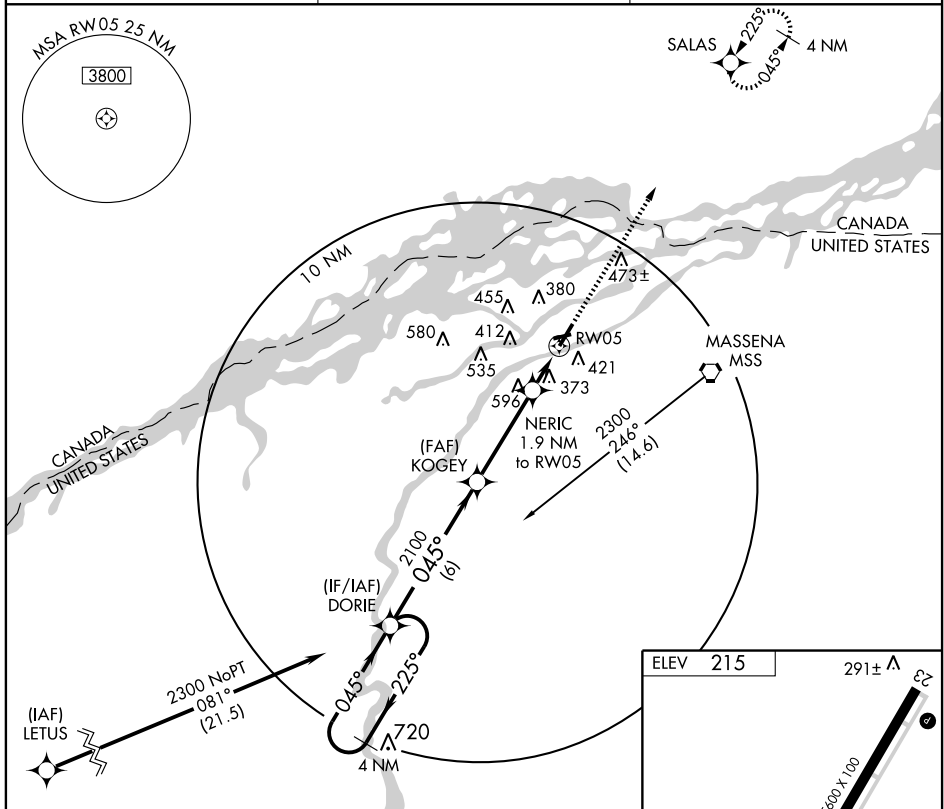
MASSENA INTL-RICHARDS FIELD (MSS)

| | | |
|-------------|----------|-------------|
| APP CRS | Rwy Idg | 5600 |
| 045° | TDZE | 205 |
| | Apt Elev | 215 |

- ∇** GPS or RNP-0.3 required. DME/DME RNP-0.3 NA.
- ▲** VDP and descent angle NA when using Ogdensburg altimeter setting.
- If local altimeter setting not received, use Ogdensburg altimeter setting and increase all MDAs 100 feet. Circling NA at night to Rwy 9-27.

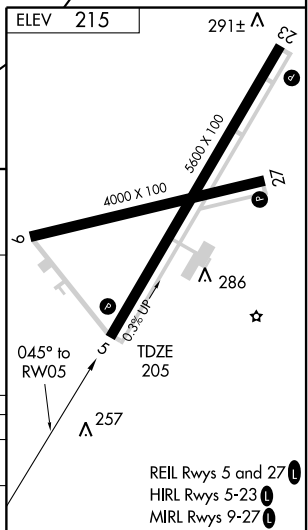
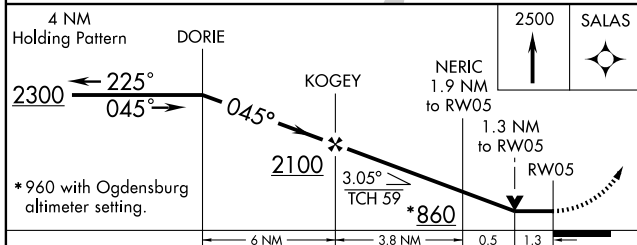
MISSED APPROACH: Climb to 2500 direct SALAS and hold.

| | | |
|------------------------|--------------------------------------|--|
| ASOS 128.075 | BOSTON CENTER 135.25 377.1 | UNICOM 123.0 (CTAF) 0 |
|------------------------|--------------------------------------|--|



NE-2, 22 OCT 2009 to 19 NOV 2009

NE-2, 22 OCT 2009 to 19 NOV 2009



| CATEGORY | A | B | C | D |
|----------|-------|-------------|------------------------|------------------------|
| LNAV MDA | 680-1 | 475 (500-1) | 680-1½ 475 (500-1½) | 680-1½ 475 (500-1½) |
| CIRCLING | 740-1 | 525 (600-1) | 740-1½ 525 (600-1½) | 900-2¼ 685 (700-2¼) |

- REIL Rwys 5 and 27 **0**
- HIRL Rwys 5-23 **0**
- MIRL Rwys 9-27 **0**