

GPS RWY 19

HOT SPRINGS MUNI (HSR)

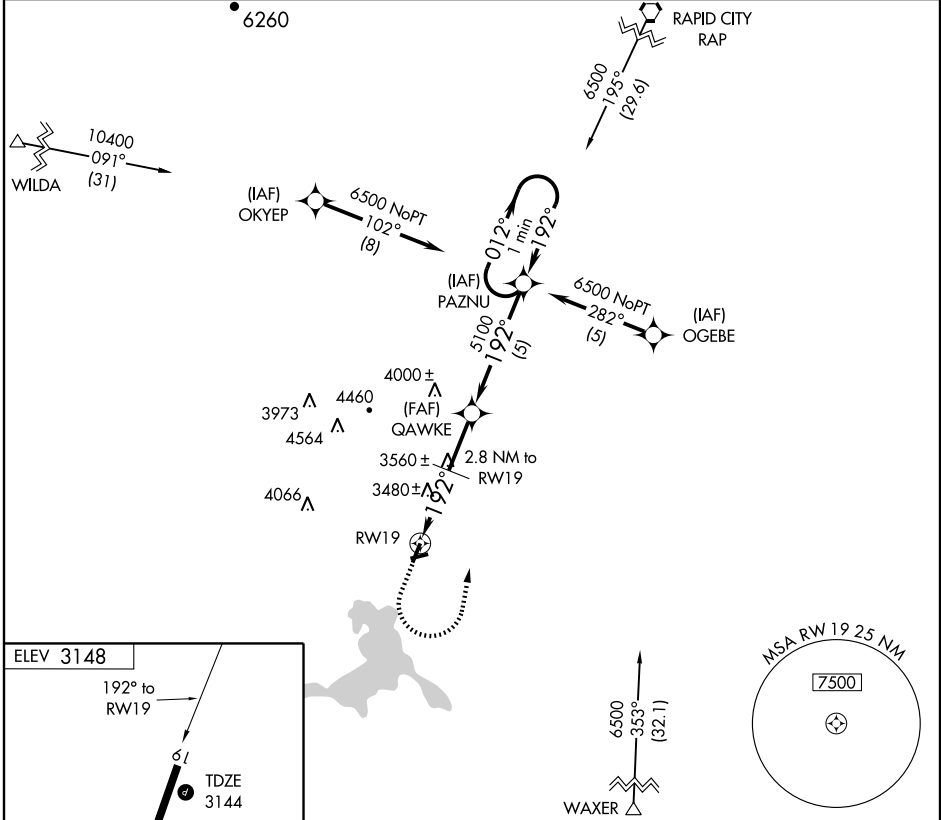
APP CRS	Rwy Idg	4505
192°	TDZE	3144
	Apt Elev	3148

▼ Use Rapid City regional altimeter setting.
 ▲ NA

MISSED APPROACH: Climb to 4200 then climbing left turn to 6500 direct PAZNU WPT and hold.

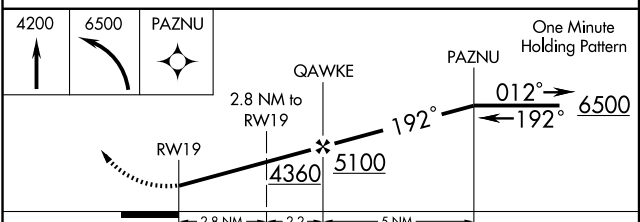
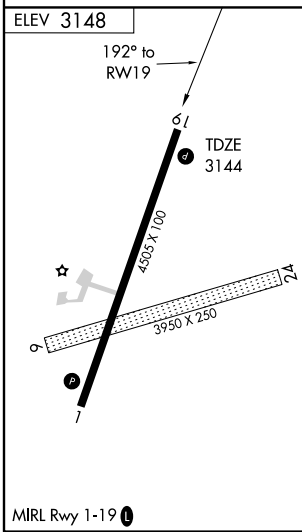
DENVER CENTER **127.95 338.2**

UNICOM **122.8 (CTAF)**



NC-1, 22 OCT 2009 to 19 NOV 2009

NC-1, 22 OCT 2009 to 19 NOV 2009



CATEGORY	A	B	C	D
S-19	3840-1	696 (700-1)	3840-2 696 (700-2)	3840-2½ 696 (700-2½)
CIRCLING	3840-1	692 (700-1)	3840-2 692 (700-2)	3900-2½ 752 (800-2½)