

VITKO-ONE DEPARTURE (VITKO1 • VITKO)

MIRAMAR MCAS (MITSCHER FLD) (KNKX)

SAN DIEGO, CALIFORNIA

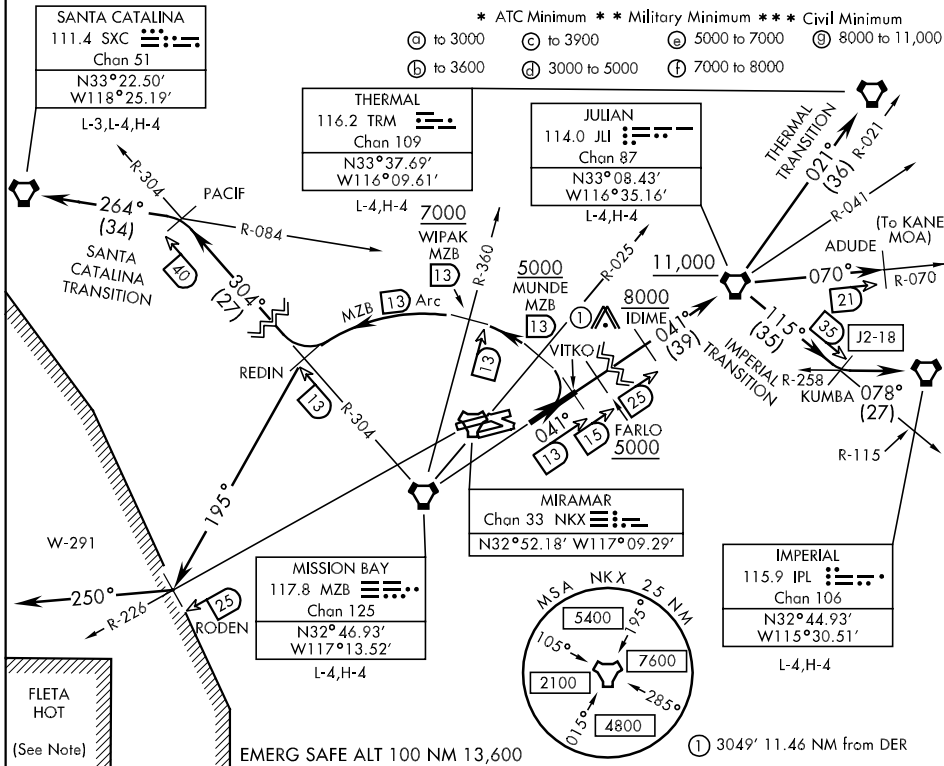
ATIS ★ 352.0
 CLNC DEL
 125.975 254.325
 GND CON
 128.625 307.325
 MIRAMAR TOWER ★
 135.2 298.925
 SOCAL DEP CON
 132.2 269.1 E

SHL-903 [USN]

Rwy	Knots	60	120	180	240	300	360
* 6L/R(ⓐ)	V/V(fpm)	520	1040	1560	2080	2600	3120
** 6L/R(ⓑ)	V/V(fpm)	280	560	840	1120	1400	1680
*** 6L/R(ⓒ)	V/V(fpm)	300	600	900	1200	1500	1800
* 6L/R(ⓓ)	V/V(fpm)	680	1360	2040	2720	3400	4080
* 6L/R(ⓔ)	V/V(fpm)	353	706	1059	1412	1765	2118
* 6L/R(ⓕ)	V/V(fpm)	300	600	900	1200	1500	1800
* 6L/R(ⓖ)	V/V(fpm)	220	440	660	880	1100	1320

* ATC Minimum ** Military Minimum *** Civil Minimum

ⓐ to 3000 ⓒ to 3900 ⓔ 5000 to 7000 ⓖ 8000 to 11,000
 ⓑ to 3600 ⓓ 3000 to 5000 ⓕ 7000 to 8000



DEPARTURE ROUTE DESCRIPTION

TAKE-OFF RWY 6L/R: Climb heading 060° to intercept and proceed via MZB R-041 to VITKO. Join MZB R-041 at or above 3000. Thence...

ADUDE TRANSITION (VITKO1 • ADUDE): Via MZB R-041 to JLI VORTAC. Then JLI R-070 to ADUDE. Cross FARLO at or above 5000. Cross IDIME at or above 8000. Cross JLI VORTAC at or above 11,000. (To operate in KANE MOA.)

IMPERIAL TRANSITION (VITKO1 • IPL): Via MZB R-041 to JLI VORTAC. Then via JLI R-115 to KUMBA INT, then via IMPERIAL R-258 to IPL R-258 to IPL VORTAC. Cross FARLO at or above 5000. Cross IDIME at or above 8000. Cross JLI VORTAC at or above 11,000.

(Continued on next page)

VITKO-ONE DEPARTURE (VITKO1 • VITKO)

SAN DIEGO, CALIFORNIA
 MIRAMAR MCAS (MITSCHER FLD) (KNKX)