

# TACAN RWY 24R

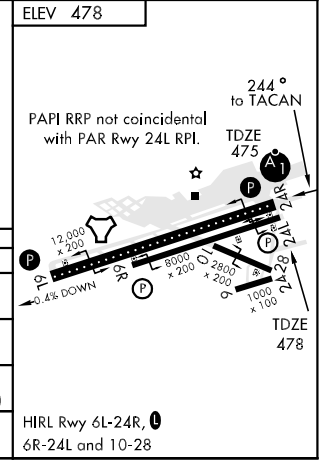
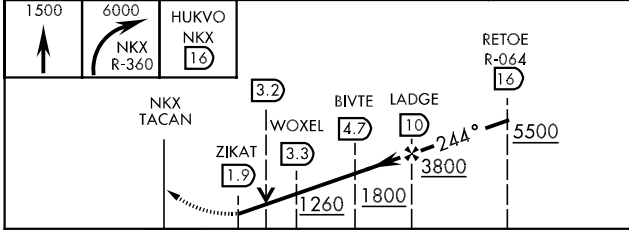
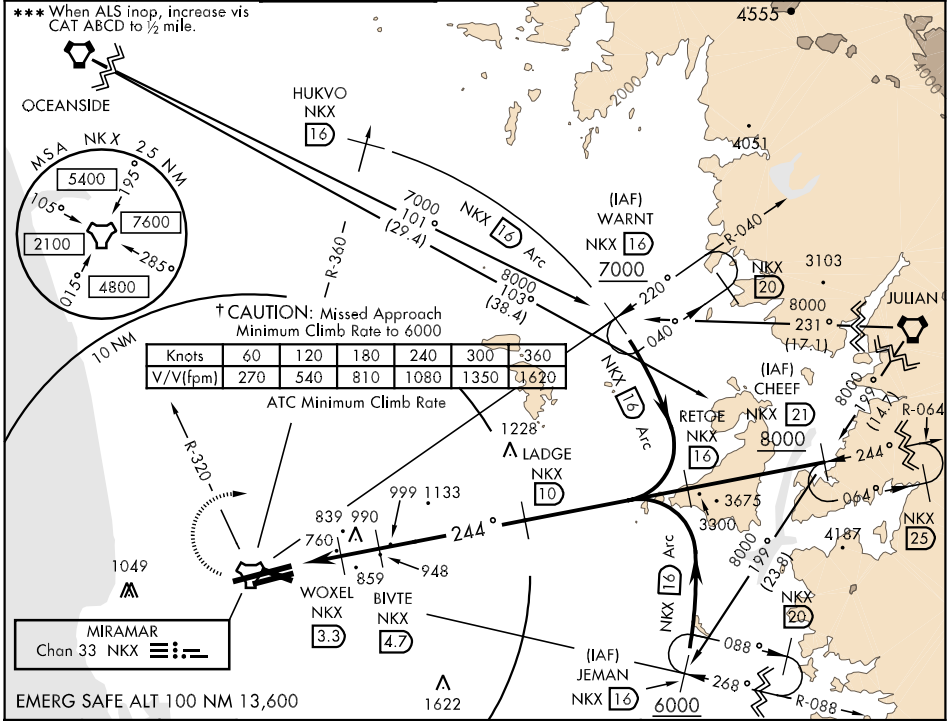
TACAN NKX Chan 33	APCH CRS 244°	Rwy Idg 12,000 TDZE 475 Arpt Elev 478
-------------------	---------------	---

AL-903 [USN]

MIRAMAR MCAS (MITSCHER FLD) (KNKX)

▼ \* When ALS inop, increase vis CAT AB to 1 mile, CAT C to 1½ miles, CAT D to 2 miles.  
\*\* Circling not authorized to Rwy 10-28.

ATIS ★ 352.0	SOCAL APP CON 132.2 269.1	MIRAMAR TOWER ★ 135.2 298.925 0	GND CON 128.625 307.325	CLNC DEL 125.975 254.325	LA CENTER 291.7	ASR/PAR
--------------	---------------------------	---------------------------------	-------------------------	--------------------------	-----------------	---------



CATEGORY	A	B	C	D
S-24R*	1100-½ 625 (700-½)		1100-1¼ 625 (700-1¼)	1100-1½ 625 (700-1½)
SIDE-STEP 24L	1100-1 622 (700-1)		1100-1¾ 622 (700-1¾)	1100-2 622 (700-2)
CIRCLING**	1100-1 622 (700-1)		1100-1¾ 622 (700-1¾)	1160-2¼ 682 (700-2¼)
S-PAR 24R***		575-¼ 100 (100-¼)		GS 3.0°

# TACAN RWY 24R

SW-3, 22 OCT 2009 to 19 NOV 2009

SW-3, 22 OCT 2009 to 19 NOV 2009