

SEAWOLF-FIVE DEPARTURE (SWOLF 5 • SWOLF)

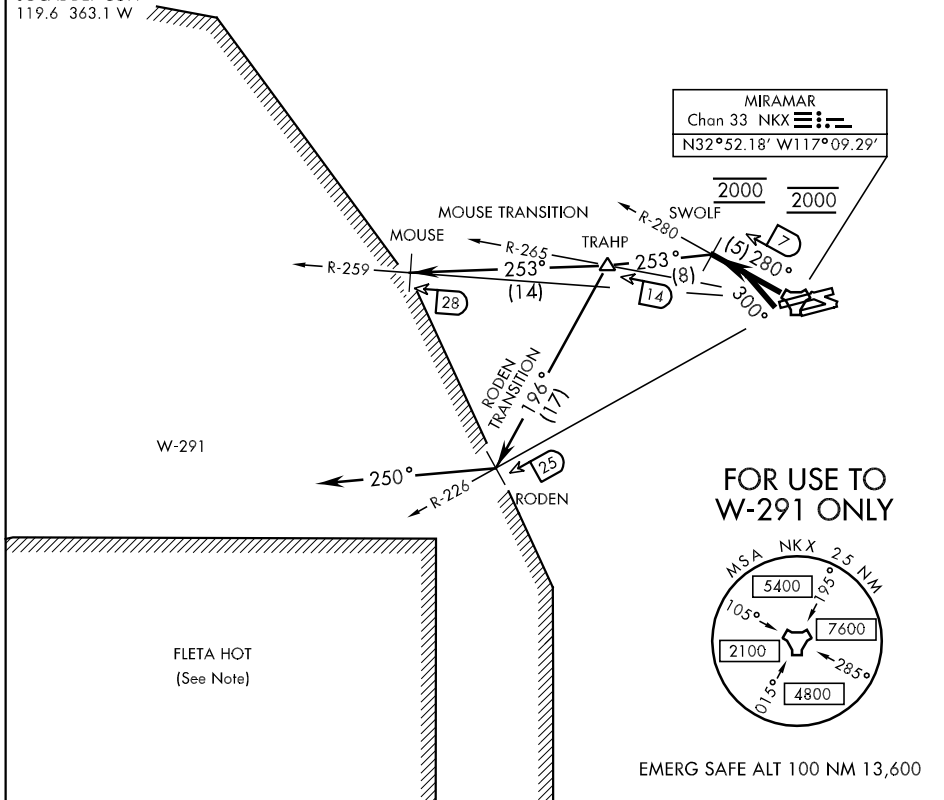
MIRAMAR MCAS (MITSCHER FLD) (KNKX)

SAN DIEGO, CALIFORNIA

ATIS ★ 352.0
 CLNC DEL
 125.975 254.325
 GND CON
 128.625 307.325
 MIRAMAR TOWER ★
 135.2 298.925
 SOCAL DEP CON
 119.6 363.1 W

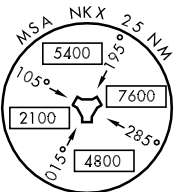
Rwy	Knots	60	120	180	240	300	360
24L/R	V/V(fpm)	780	1560	2340	3120	3900	4680

ATC Minimum Climb Rate to 2000



MIRAMAR
 Chan 33 NKX
 N32°52.18' W117°09.29'

FOR USE TO W-291 ONLY



EMERG SAFE ALT 100 NM 13,600

DEPARTURE ROUTE DESCRIPTION

TAKE-OFF RWY 24L/R: Climbing right turn to 2000 via heading 300° to intercept and proceed via NKX R-280 to SWOLF. Complete turn within NKX 2 DME. Join NKX R-280 at 2000 mand. Cross SWOLF at 2000 mand. Thence...

MOUSE TRANSITION (SWOLF 5 • MOUSE): Turn left heading 253° to intercept NKX R-259 at MOUSE. Maintain 2000 for entry into W-291.

(Continued on next page)

SEAWOLF-FIVE DEPARTURE (SWOLF 5 • SWOLF)

SAN DIEGO, CALIFORNIA

MIRAMAR MCAS (MITSCHER FLD) (KNKX)

SW-3, 22 OCT 2009 to 19 NOV 2009

SW-3, 22 OCT 2009 to 19 NOV 2009