

APCH CRS	Rwy Idg	12,000
240°	TDZE	475
	Arpt Elev	478

AL-903 [USN]

MIRAMAR MCAS (MITSCHER FLD) (KNKX)

▼ * When ALS inop, increase vis CAT AB to 1 mile, CAT C to 1½ miles, CAT D to 1¾ miles, CAT E to 2 miles.

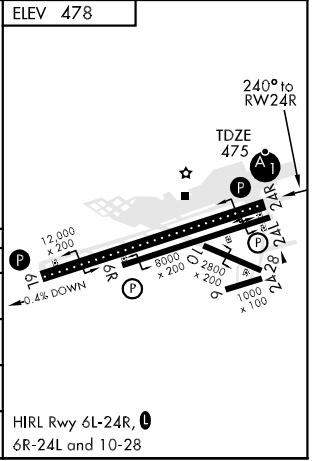
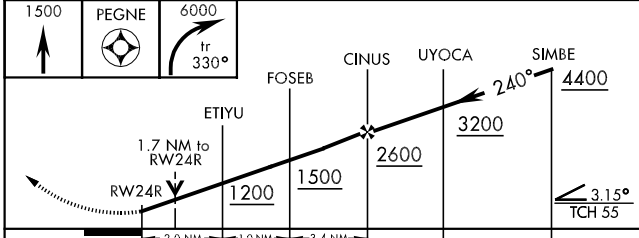
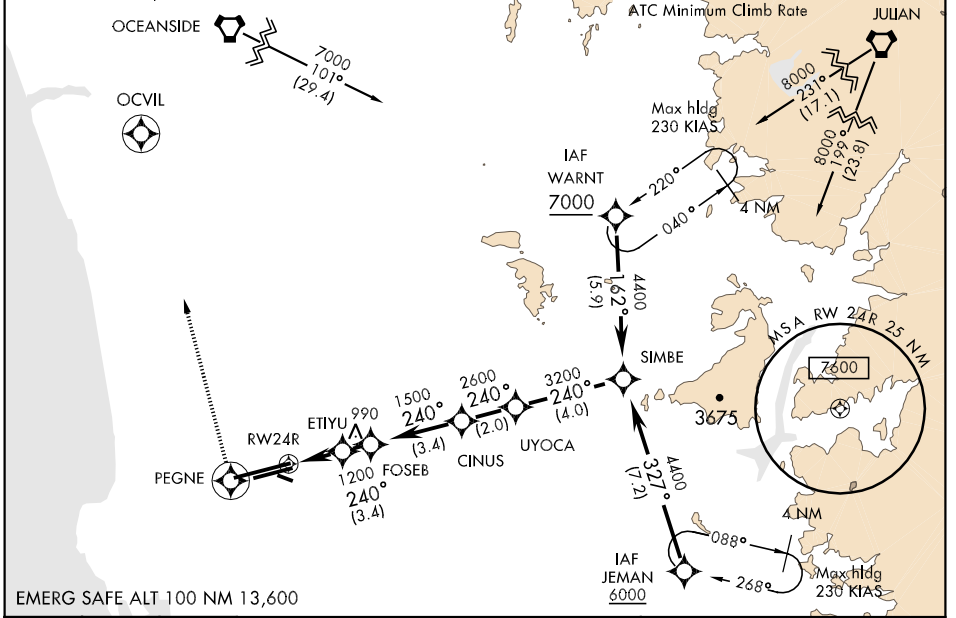
⚠ † MISSED APPROACH: Climb to 1500 direct PEGNE WP then climbing right turn to 6000 via 330° track to OCVIL WP. Cross OCVIL at 6000 mand, then climbing right turn to 7000 via 085° track to WARNT WP and hold.

ATIS ★	SOCAL APP CON	MIRAMAR TOWER ★	GND CON	CLNC DEL	LA CENTER	ASR/ PAR
352.0	132.2 269.1	135.2 298.925 0	128.625 307.325	125.975 254.325	291.7	

****** When ALS inop, increase vis CAT ABCDE to 1½ miles.
******* Circling not authorized to Rwy 10-28 and CAT E circling not authorized S of Rwy 6R-24L.
******** When ALS inop, increase vis CAT ABCDE to ½ mile.
 BARO VNAV NA below -16°C (3°F)
 GPS or RNP-0.3 Required. DME/DME RNP-0.3 NA.

⚠ CAUTION: Missed Approach Minimum Climb Rate to 6000

(Knots)	80	120	180	240	300	360
VAV(ftpm)	330	660	990	1080	1650	1980



CATEGORY	A	B	C	D	E
LNAV MDA *	1060-½	585 (600-½)	1060-1	1060-1¼	1060-1½
LNAV/VNAV DA**	900 - 1		425 (500-1)		
CIRCLING ***	1060-1	582 (600-1)	1060-1½	1160-2¼	1360-3
S-PAR 24R	575 - ¼		100 (100-¼)	GS 3.0°	

SW-3, 22 OCT 2009 to 19 NOV 2009

SW-3, 22 OCT 2009 to 19 NOV 2009