

JULIAN-FIVE DEPARTURE (JLI 5 • JLI)

MIRAMAR MCAS (MITSCHER FLD) (KNKX)

SAN DIEGO, CALIFORNIA

ATIS ★ 352.0
 CLNC DEL
 125.975 254.325
 GND CON
 128.625 307.325
 MIRAMAR TOWER ★
 135.2 298.925
 SOCAL DEP CON
 132.2 269.1 E

SHL-903 [USN]

Rwy	Knots	60	120	180	240	300	360
* 24L/R (a)	V/V(fpm)	280	560	840	1120	1400	1680
** 24L/R (b)	V/V(fpm)	305	610	915	1220	1525	1830
† 24L/R (c)	V/V(fpm)	735	1470	2205	2940	3675	4410
† 24L/R (d)	V/V(fpm)	234	468	702	936	1170	1404

* Military Minimum ** Civil Minimum † ATC Minimum

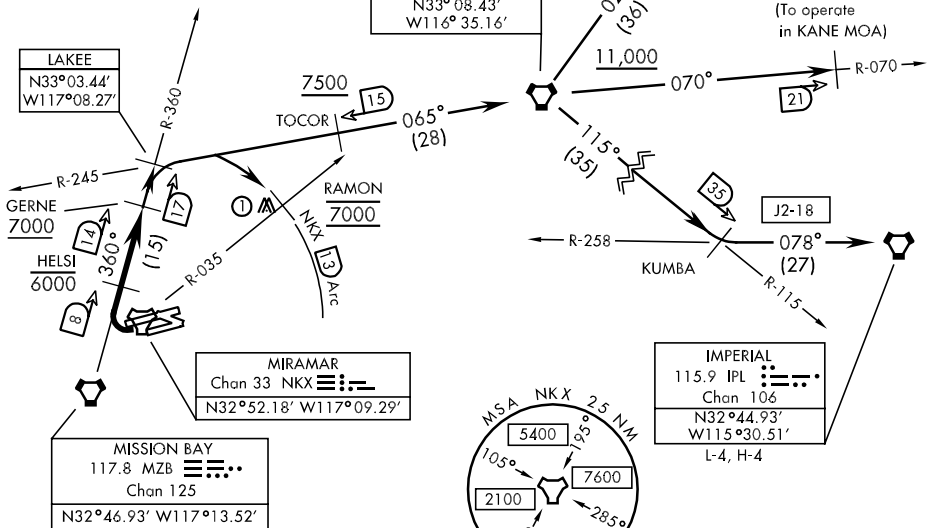
- (a) to 3600
- (b) to 3900
- (c) to 7000
- (d) 7000 to 11,000

CAUTION: Do not overshoot MZB R-360. This procedure turn radius of less than 2 NM to join MZB R-360. Advise ATC prior to dep if this maneuver is unacceptable.

JULIAN
 114.0 JLI
 Chan 87
 N33°08.43' W116°35.16'

THERMAL
 116.2 TRM
 Chan 109
 N33°37.69' W116°09.61'
 L-4, H-4

ADUDE
 (To operate in KANE MOA)



EMERG SAFE ALT 100 NM 13,600

(1) 3018' Twr 12.5 NM from DER.

SW-3, 22 OCT 2009 to 19 NOV 2009

SW-3, 22 OCT 2009 to 19 NOV 2009



DEPARTURE ROUTE DESCRIPTION

TAKE-OFF RWY 24L/R: Turn right to intercept and proceed via MZB R-360 to LAKEE int. Cross HELSI at or below 6000. Cross GERNE at or above 7000. Thence...

ADUDE TRANSITION (JLI5-ADUDE): Via JLI R-245 to JLI VORTAC. Then via JLI R-070 to ADUDE. Cross TOCOR at or above 7500. Cross JLI VORTAC at or above 11,000. (To operate in KANE MOA.)

IMPERIAL TRANSITION (JLI5-IPL): Via JLI R-245 to JLI VORTAC. Then via JLI R-115 to KUMBA int, then via IPL R-258 to IPL VORTAC. Cross TOCOR at or above 7500. Cross JLI VORTAC at or above 11,000.

(Continued on next page)

JULIAN-FIVE DEPARTURE (JLI 5 • JLI)

SAN DIEGO, CALIFORNIA

MIRAMAR MCAS (MITSCHER FLD) (KNKX)