

TACAN NKX Chan 33	APCH CRS 244°	Rwy Idg 12,000 TDZE 475 Arpt Elev 478
----------------------	------------------	---

JAL-903 [USN]

MIRAMAR MCAS (MITSCHER FLD) (KNKX)

▼ * When ALS inop, increase vis CAT C to 1¾ miles, CAT D to 2 miles, CAT E to 2½ miles.
 ** Circling not authorized to Rwy 10-28. CAT E circling not authorized S of Rwy 6R-24L.

ALSF-1



† MISSED APPROACH: Climb to 1500, then climbing right turn to 6000 via NKX R-360 to HUKVO. Cross R-320 at 3000 Mand., cross HUKVO at 6000 mandatory. Arc NE of NKX TACAN climbing to 7000 via 16 mile arc to WARTN and hold.

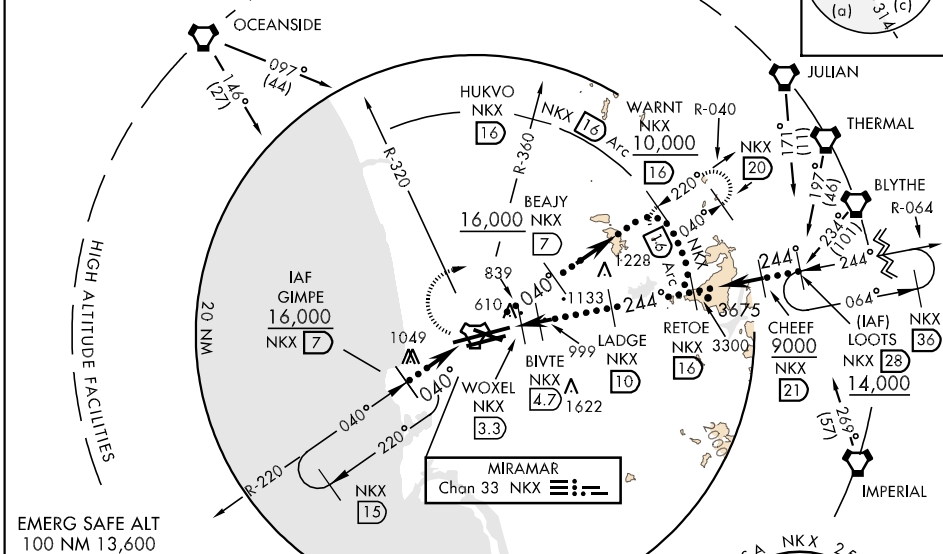
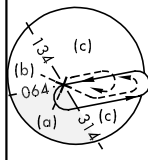
ATIS ★ 352.0	SOCAL APP CON 132.2 269.1	MIRAMAR TOWER ★ 135.2 298.925	GND CON 128.625 307.325	CLNC DEL 125.975 254.325	ASR/ PAR	LA CENTER 291.7
-----------------	------------------------------	----------------------------------	----------------------------	-----------------------------	-------------	--------------------

*** When ALS inop, increase vis CAT CDE to ½ mile.

† CAUTION: Missed Approach Minimum Climb Rate to 6000

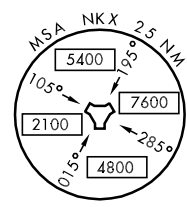
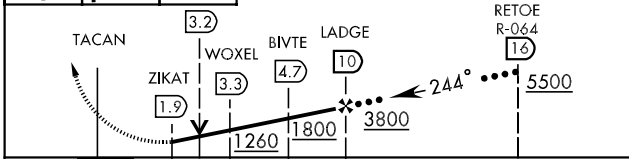
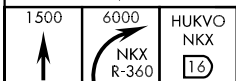
Knots	60	120	180	240	300	360
V/V(fpm)	270	540	810	1080	1350	1620

ATC Minimum Climb Rate



SW-3, 22 OCT 2009 to 19 NOV 2009

SW-3, 22 OCT 2009 to 19 NOV 2009



	C 4.1 NM		D		E	
S-24R *	1100-1¼ 625 (700-1¼)	1100-1½ 625 (700-1½)	1100-1½ 625 (700-1½)	1100-1¼ 625 (700-1¼)	1100-1¼ 625 (700-1¼)	1100-1¼ 625 (700-1¼)
SIDE-STEP 24L	1100-1¼ 622 (700-1¼)	1100-2 622 (700-2)	1100-2 622 (700-2)	1100-2¼ 622 (700-2¼)	1100-2¼ 622 (700-2¼)	1100-2¼ 622 (700-2¼)
CIRCLING **	1100-1¼ 622 (700-1¼)	1160-2¼ 682 (700-2¼)	1160-2¼ 682 (700-2¼)	1360-3 882 (900-3)	1360-3 882 (900-3)	1360-3 882 (900-3)
S-PAR 24R ***	575-¼	100	(100-¼)	GS 3.0°	GS 3.0°	GS 3.0°

