

ARLO-TWO DEPARTURE (ARLO2 • REDIN)

MIRAMAR MCAS (MITSCHER FLD) (KNKX)

SAN DIEGO, CALIFORNIA

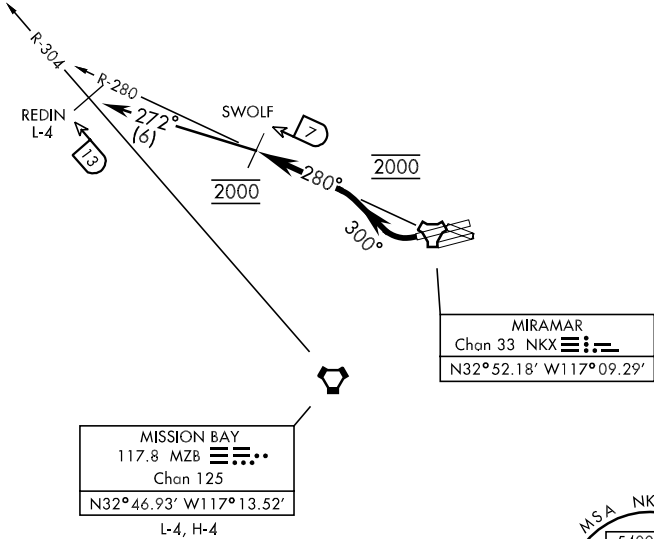
Rwy	Knots	60	120	180	240
24L/R	V/V(fpm)	780	1560	2340	3120

ATC Climb Rate to 2000

ATIS ★ 352.0
 CLNC DEL
 125.975 254.325
 GND CON
 128.625 307.325
 MIRAMAR TOWER ★
 135.2 298.925
 SOCAL DEP CON
 119.6 363.1 W

SL-903 [USN]

RESTRICTED TO CAT A & B ACFT ONLY



SW-3, 22 OCT 2009 to 19 NOV 2009

SW-3, 22 OCT 2009 to 19 NOV 2009

EMERG SAFE ALT 100 NM 13,600



DEPARTURE ROUTE DESCRIPTION

TAKE-OFF RWY 24L/R: Climbing right turn to 2000 via heading 300° to intercept and join NKX R-280 to SWOLF. Complete turn within NKX 2 DME. Join NKX R-280 at 2000 mand. Cross SWOLF at 2000 mand.

REDIN TRANSITION (ARLO2 • REDIN): Turn left heading 272° to intercept MZB R-304 at REDIN.

ARLO-TWO DEPARTURE (ARLO2 • REDIN)

SAN DIEGO, CALIFORNIA

MIRAMAR MCAS (MITSCHER FLD) (KNKX)