

# ZAPLE VOR RWY 5

HOT SPRINGS/MEMORIAL FIELD (HOT)

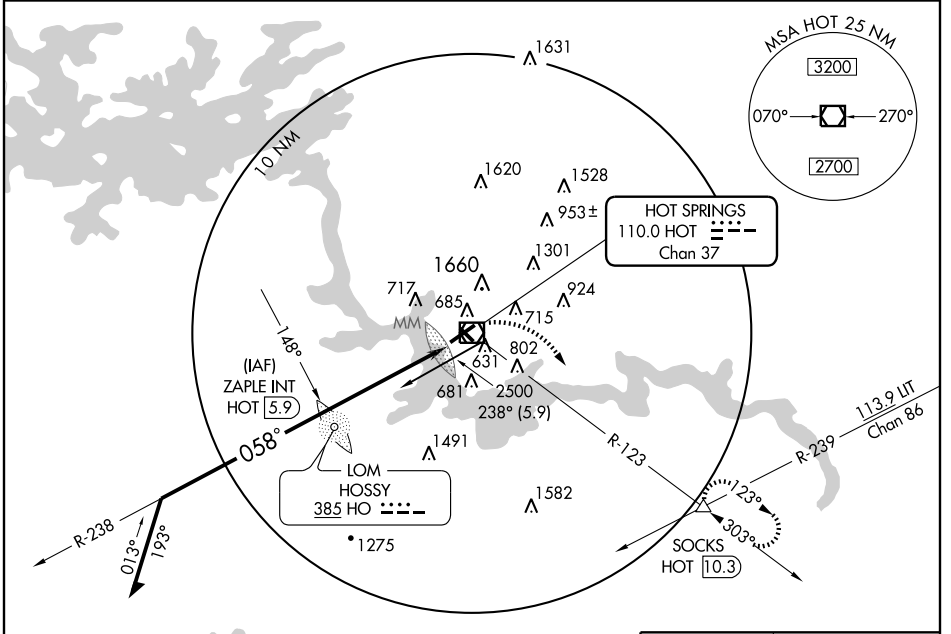
VOR/DME HOT <b>110.0</b> Chan <b>37</b>	APP CRS <b>058°</b>	Rwy Idg <b>6595</b> TDZE <b>515</b> Apt Elev <b>540</b>
---	------------------------	---

**⚠** Circling not authorized northwest of Rwy 5-23. Obtain local altimeter setting on CTAF; when not received, use Little Rock altimeter setting. Memorial Field altimeter setting minimums: for inoperative MALSR, increase S-5 Cat. D visibility to 1¼.

**MALSR**  
AS

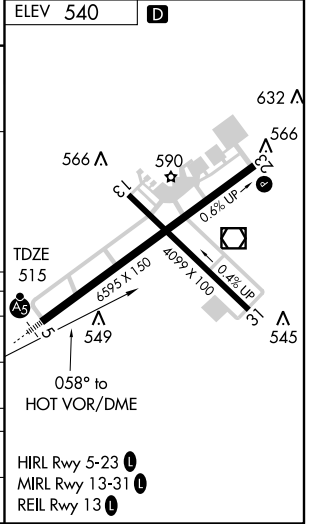
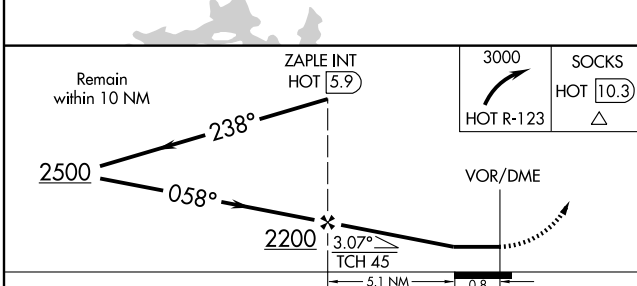
**MISSED APPROACH:** Climb right turn to 3000 via HOT R-123 to SOCKS Int/HOT 10.3 DME and hold.

ASOS <b>119.925</b>	MEMPHIS CENTER <b>128.475 377.15</b>	UNICOM <b>123.0 (CTAF) 0</b>
------------------------	---	---------------------------------



SC-1, 22 OCT 2009 to 19 NOV 2009

SC-1, 22 OCT 2009 to 19 NOV 2009



CATEGORY	A	B	C	D
S-5	940-½	425 (500-½)	940-¾ 425 (500-¾)	940-1 425 (500-1)
CIRCLING	1060-1	520 (600-1)	1060-1½ 520 (600-1½)	1120-2 580 (600-2)
<b>LITTLE ROCK ALTIMETER SETTING MINIMUMS</b>				
S-5	1080-½	565 (600-½)	1080-1 565 (600-1)	1080-1¼ 565 (600-1¼)
CIRCLING	1200-1	660 (700-1)	1200-1¾ 660 (700-1¾)	1260-2¼ 720 (800-2¼)