

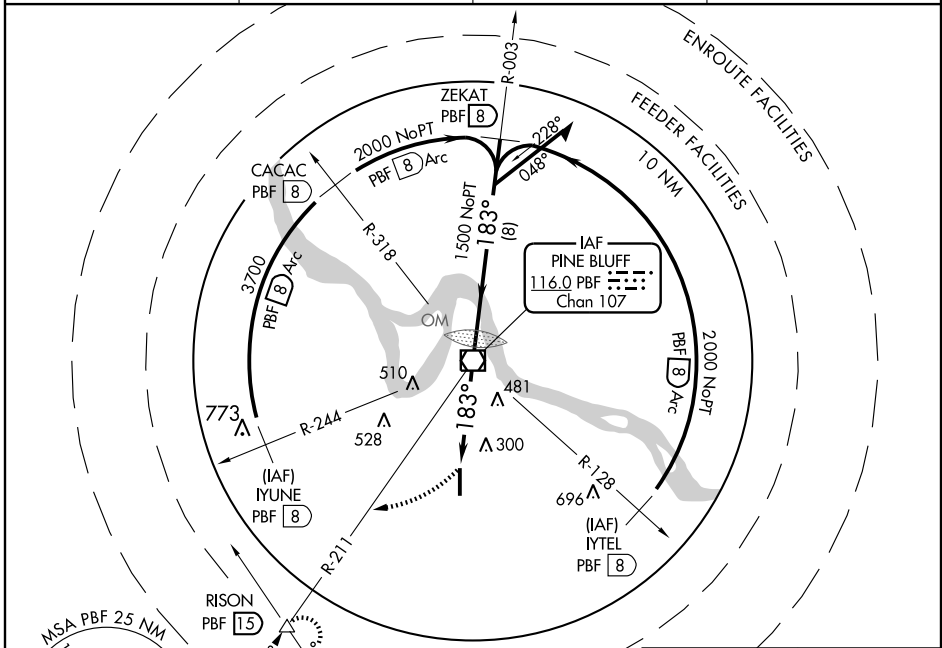
VOR/DME PBF 116.0 Chan 107	APP CRS 183°	Rwy Idg TDZE 206 Apt Elev 206	5998
--	------------------------	---	-------------

VOR RWY 18

PINE BLUFF/GRIDER FIELD (PBF)

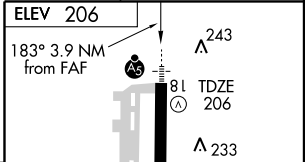
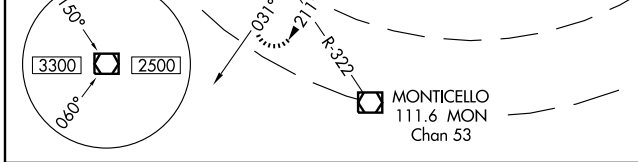
For inoperative MALS, increase Cat A/B visibility to 1.	MALS R AS	MISSED APPROACH: Climb to 2000 via PBF R-211 to RISON INT/PBF 15 DME and hold.
---	--------------	--

ASOS 120.775	LITTLE ROCK APP CON 119.85	CLNC DEL 119.85	UNICOM 123.0 (CTAF) 0
------------------------	--------------------------------------	---------------------------	--



SC-1, 22 OCT 2009 to 19 NOV 2009

SC-1, 22 OCT 2009 to 19 NOV 2009



2000	RISON		
PBF R-211	PBF 15		
PBF 3.9	PBF 2.2	≤ 3.04% TCH 52	
1.7 NM	2.2 NM		

CATEGORY	A	B	C	D
S-18	800-¾ 594 (600-¾)		800-1 594 (600-1)	800-1¼ 594 (600-1¼)
CIRCLING	800-1 594 (600-1)		800-1½ 594 (600-1½)	800-2 594 (600-2)

ELEV 206	183° 3.9 NM from FAF	AS	243			
		81	TDZE 206			
			233			
		269				
		256				
		36				
		289 ±	MIRL Rwy 18-36 0			
			FAF to MAP 3.9 NM			
	Knots	60	90	120	150	180
	Min:Sec	3:54	2:36	1:57	1:34	1:18