

ILS or LOC RWY 8

BUTLER COUNTY / K W SCHOLTER FIELD (BTP)

LOC I-BTP 111.5	APP CRS 080°	Rwy Idg 4801
		TDZE 1246
		Apt Elev 1248

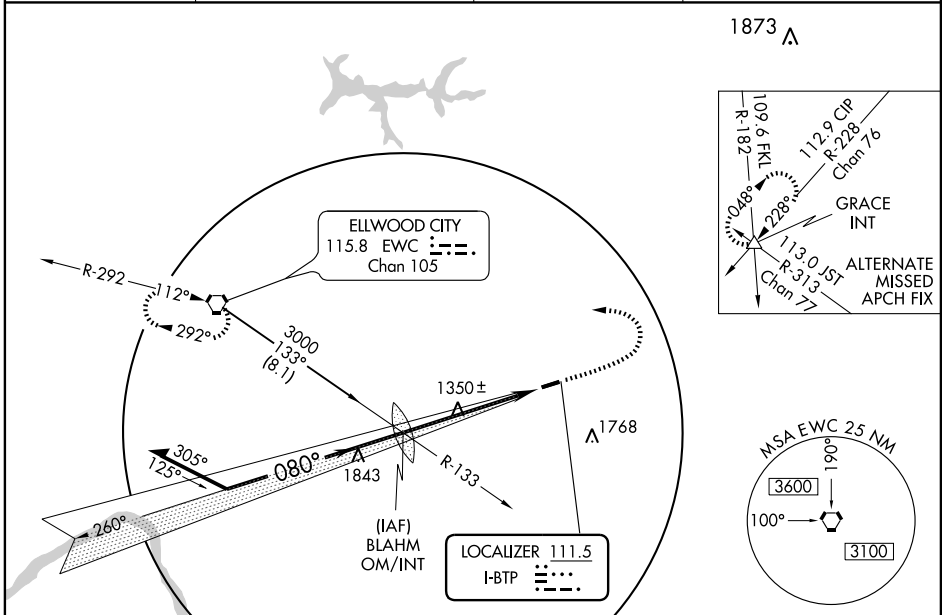
▼ Visibility reduction by helicopters NA. Inoperative table does not apply. For inoperative MALSR, increase S-LOC-8 CAT D visibility to 1 1/4 mile. If local altimeter setting not received, use Pittsburgh Intl altimeter setting and increase DA to 1552 feet; increase all MDAs 60 feet.

▲

MALSF

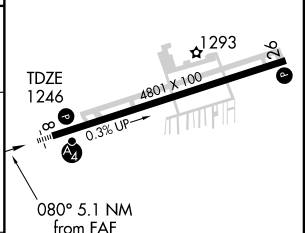
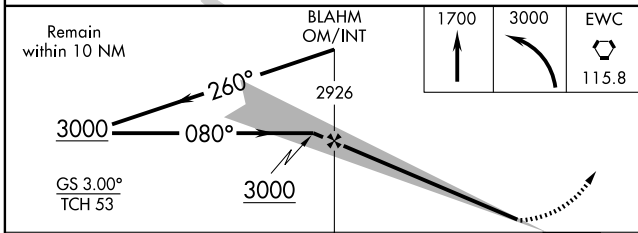
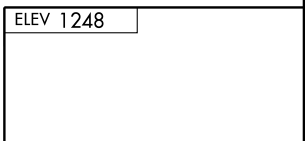
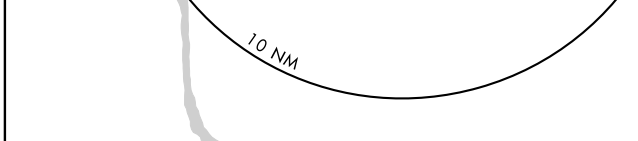
MISSED APPROACH: Climb to 1700, then climbing left turn to 3000 direct EWC VORTAC and hold.

AWOS-3 133.825	PITTSBURGH APP CON 124.75 338.2	CLNC DEL 128.7	UNICOM 122.8 (CTAF) 1
--------------------------	---	--------------------------	--



NE-4, 22 OCT 2009 to 19 NOV 2009

NE-4, 22 OCT 2009 to 19 NOV 2009



CATEGORY	A	B	C	D
S-ILS 8		1496-1	250 (300-1)	
S-LOC 8		1600-1	354 (400-1)	1600-1 1/4 354 (400-1 1/4)
CIRCLING	1820-1	572 (600-1)	1820-1 1/2 572 (600-1 1/2)	1820-2 572 (600-2)

REIL Rwy 26				
HIRL Rwy 8-26				
FAF to MAP 5.1 NM				
Knots	60	90	120	150
Min:Sec	5:06	3:24	2:33	2:02

ILS or LOC RWY 8