

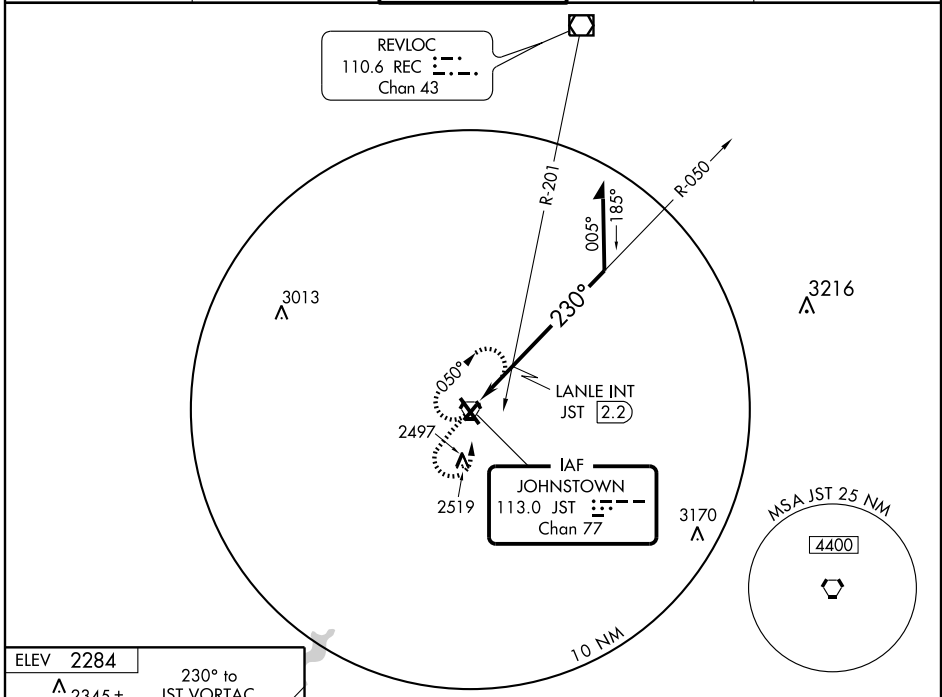
VORTAC JST 113.0 Chan 77	APP CRS 230°	Rwy Idg TDZE Apt Elev	4386 2284 2284
---------------------------------------	------------------------	-----------------------------	---

JOHNSTOWN /
JOHN MURTHA JOHNSTOWN-CAMBRIA COUNTY (JST)

VOR RWY 23

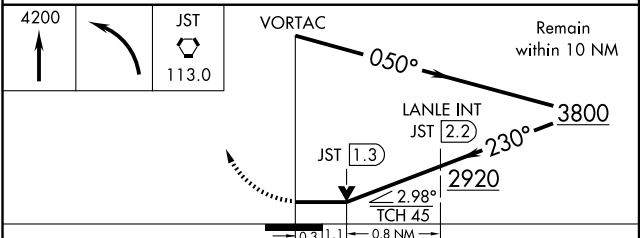
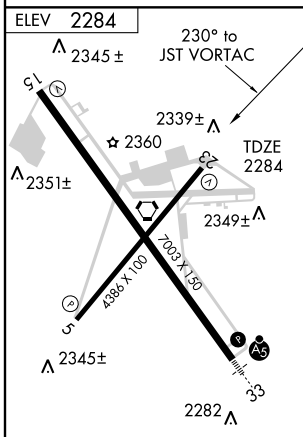
<p>▼ Visibility reduction by helicopters NA.</p>		<p>MISSED APPROACH: Climb to 4200 then left turn direct JST VORTAC and hold.</p>	
--	--	--	--

ATIS 118.325	CLEVELAND CENTER 121.2 299.2	JOHNSTOWN TOWER* 125.75 (CTAF)	GND CON 121.6	UNICOM 122.95
------------------------	--	---	-------------------------	-------------------------



NE-4, 22 OCT 2009 to 19 NOV 2009

NE-4, 22 OCT 2009 to 19 NOV 2009



CATEGORY	A	B	C	D
S-23	2920-1	636 (700-1)	2920-1 ³ / ₄ 636 (700-1 ³ / ₄)	2920-2 636 (700-2)
CIRCLING	2920-1	636 (700-1)	2920-1 ³ / ₄ 636 (700-1 ³ / ₄)	2920-2 636 (700-2)
LANLE FIX MINIMUMS				
S-23	2660-1 376 (400-1)			2660-1 ¹ / ₄ 376 (400-1 ¹ / ₄)
CIRCLING	2660-1 376 (400-1)	2740-1 456 (500-1)	2880-1 ¹ / ₂ 596 (600-1 ¹ / ₂)	2880-2 596 (600-2)

REIL Rws 5 and 23
HIRL Rwy 15-33
MIRL Rws 5-23

VOR RWY 23