

JOHNSTOWN, PENNSYLVANIA

# TACAN RWY 23

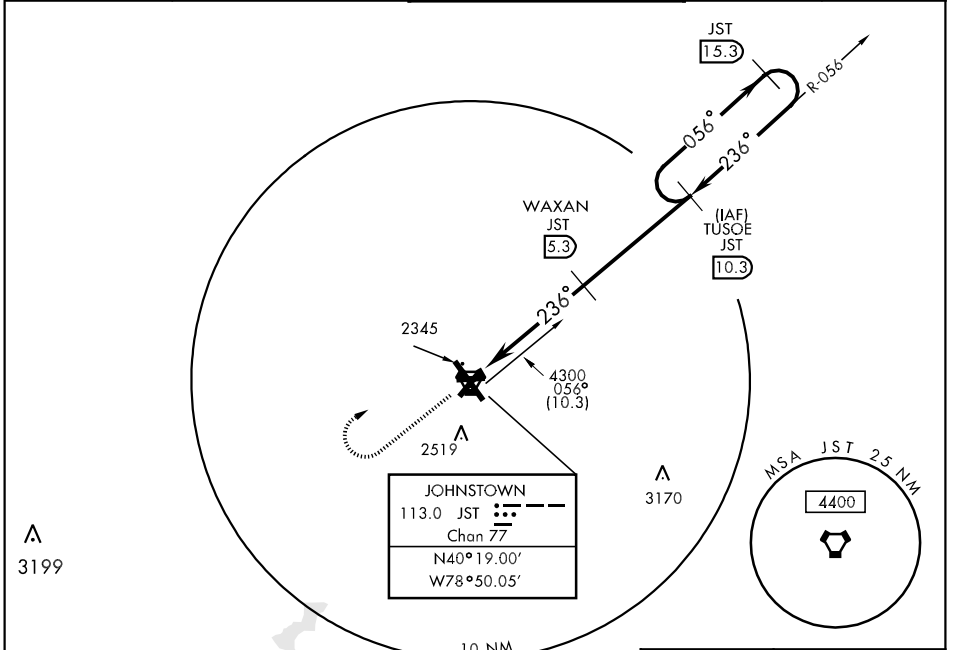
VORTAC JST <b>113.0</b> Chan <b>77</b>	APCH CRS <b>236°</b>	Rwy ldg TDZE <b>4507</b> <b>2281</b>	Arpt Elev <b>2284</b>
--	-------------------------	--	--------------------------

AL-898 [USAF]

JOHN MURTHA JOHNSTOWN-  
CAMBRIA COUNTY (JST)

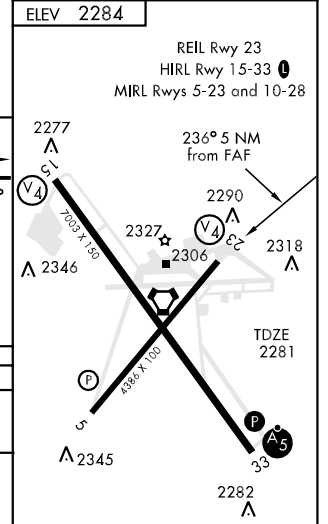
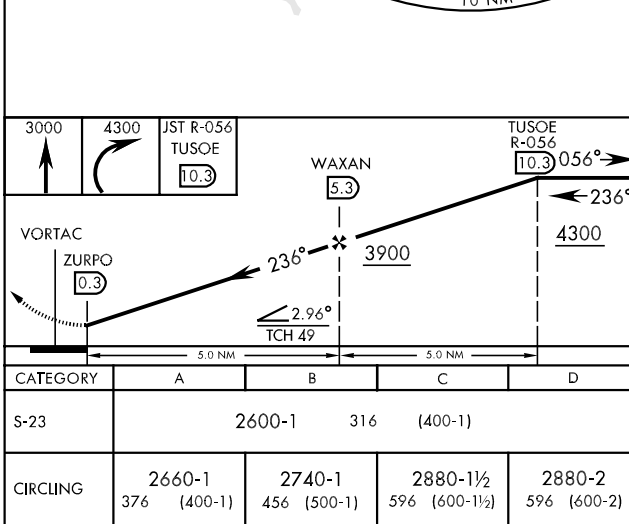
▽ MISSED APPROACH: Climb to 3000, then climbing right turn to 4300 via JST R-056 to TUSOE/JST 10.3 DME and hold.

ATIS <b>118.325</b>	CLEVELAND CENTER <b>121.2 299.2</b>	JOHNSTOWN TOWER ★ <b>125.75 253.5</b> (CTAF) <b>0</b>	GND CON <b>121.6</b>	ASOS <b>118.325</b>
------------------------	--	--	-------------------------	------------------------



NE-4, 22 OCT 2009 to 19 NOV 2009

NE-4, 22 OCT 2009 to 19 NOV 2009



JOHNSTOWN, PENNSYLVANIA  
Orig 06103

40° 19' N-78° 50' W

JOHN MURTHA JOHNSTOWN-  
CAMBRIA COUNTY (JST)  
**TACAN RWY 23**