

JOHNSTOWN, PENNSYLVANIA

TACAN RWY 15

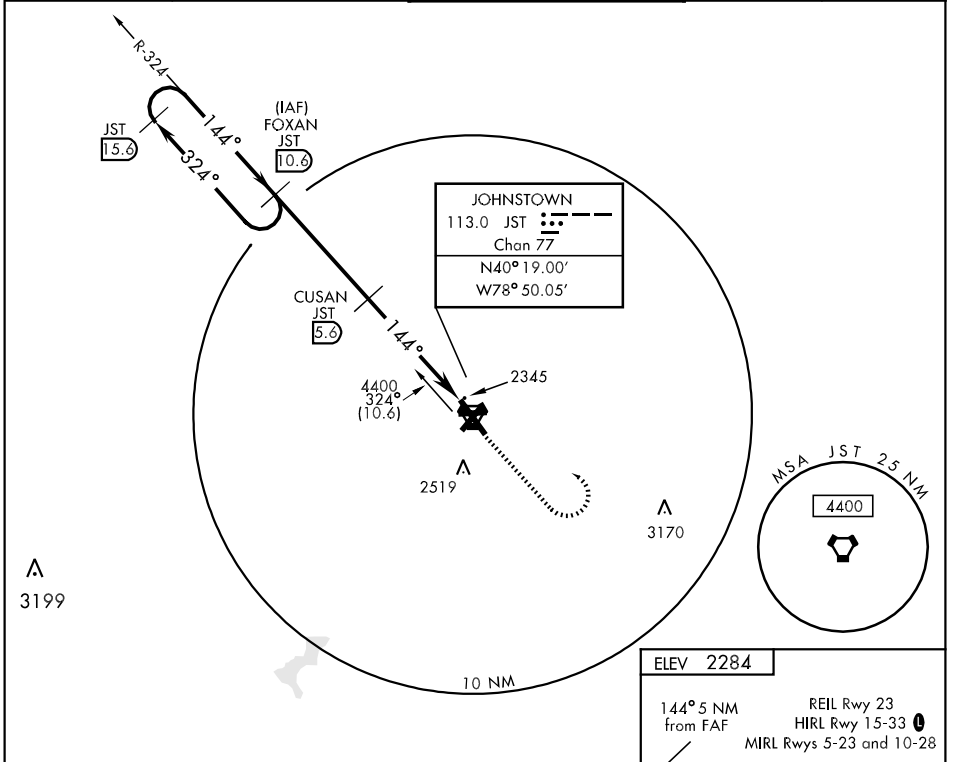
VORTAC JST 113.0 Chan 77	APCH CRS 144°	Rwy ldg TDZE Arprt Elev 7003 2276 2284
--	-------------------------	--

AL-898 [USAF]

JOHN MURTHA JOHNSTOWN-
CAMBRIA COUNTY (JST)

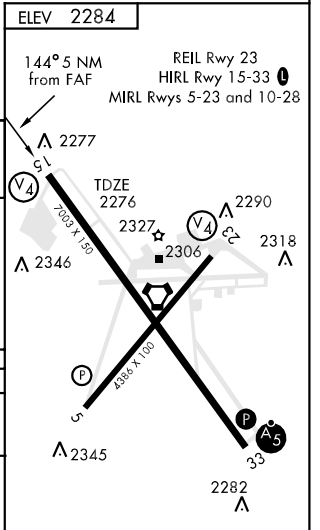
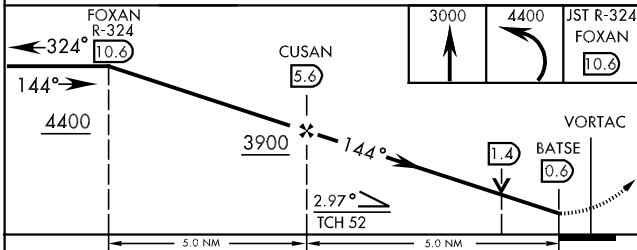
▽ MISSED APPROACH: Climb to 3000, then climbing left turn to 4400 via JST R-324 to FOXAN/JST 10.6 DME and hold.

ATIS 118.325	CLEVELAND CENTER 121.2 299.2	JOHNSTOWN TOWER ★ 125.75 253.5 (CTAF) 0	GND CON 121.6	ASOS 118.325
------------------------	--	--	-------------------------	------------------------



NE-4, 22 OCT 2009 to 19 NOV 2009

NE-4, 22 OCT 2009 to 19 NOV 2009



CATEGORY	A	B	C	D
S-15	2600-1	324	(400-1)	
CIRCLING	2660-1 376 (400-1)	2740-1 456 (500-1)	2880-1½ 596 (600-1½)	2880-2 596 (600-2)

JOHNSTOWN, PENNSYLVANIA
Orig 06103

40° 19' N-78° 50' W

JOHN MURTHA JOHNSTOWN-
CAMBRIA COUNTY (JST)
TACAN RWY 15