

WAAS CH 53513 W15A	APP CRS 154°	Rwy Idg 7003 TDZE 2276 Apt Elev 2284
--	------------------------	---

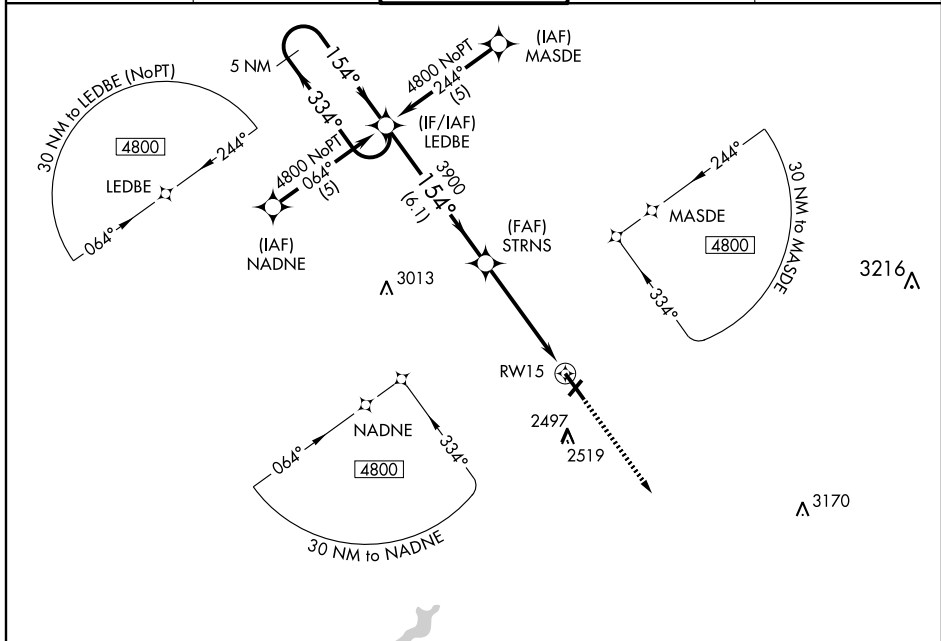
JOHNSTOWN /
JOHN MURTHA JOHNSTOWN-CAMBRIA COUNTY (JST)

RNAV (GPS) RWY 15

▼ For uncompensated Baro-VNAV systems, LNAV/VNAV NA below -19°C (-2°F) or above 44°C (111°F). DME/DME RNP-0.3 NA. Visibility reduction by helicopters NA.

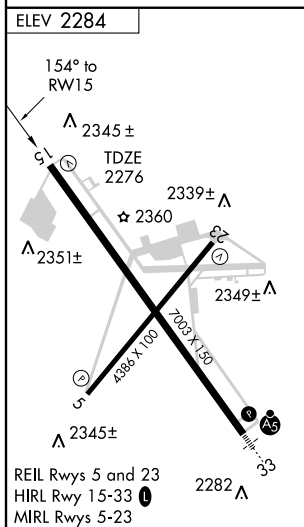
MISSED APPROACH: Climb to 4900 direct COTSO and hold.

ATIS 118.325	CLEVELAND CENTER 121.2 299.2	JOHNSTOWN TOWER * 125.75 (CTAF) 0	GND CON 121.6	UNICOM 122.95
------------------------	--	---	-------------------------	-------------------------

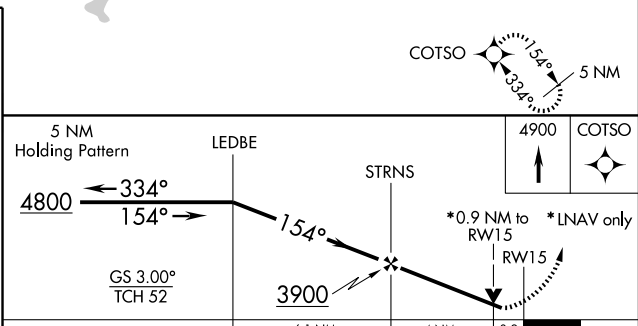


NE-4, 22 OCT 2009 to 19 NOV 2009

NE-4, 22 OCT 2009 to 19 NOV 2009



REIL Rws 5 and 23
HIRL Rwy 15-33
MIRL Rws 5-23



CATEGORY	A	B	C	D
LPV DA		2526-¾	250 (300-¾)	
LNAV/VNAV DA		2595-1	319 (400-1)	
LNAV MDA	2620-1	344 (400-1)		2620-1½ 344 (400-1½)
CIRCLING	2660-1 376 (400-1)	2740-1 456 (500-1)	2880-1½ 596 (600-1½)	2880-2 596 (600-2)

RNAV (GPS) RWY 15