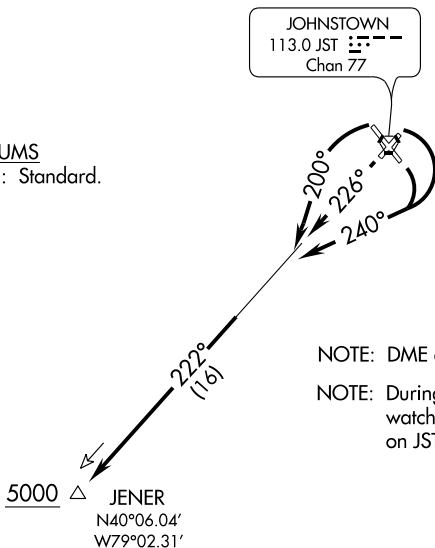


JENER THREE DEPARTURE

ATIS 118.325
GND CON
121.6
JOHNSTOWN TOWER ★
125.75 (CTAF)
CLEVELAND CENTER
121.2 299.2

TAKE-OFF MINIMUMS

Rwy 5, 15, 23, 33: Standard.



NOTE: DME and RADAR required.

NOTE: During VFR conditions watch for opposing traffic on JST R-222.

TAKE-OFF OBSTACLES

Rwy 5: Trees beginning 326' from DER, 342' right of centerline, up to 100' AGL/2358' MSL.

Trees beginning 887' from DER, 384' left of centerline, up to 100' AGL/2341' MSL.

Rwy 23: Trees beginning 215' from DER, 227' right of centerline, up to 100' AGL/2339' MSL.

Trees beginning 431' from DER, 250' left of centerline, up to 100' AGL/2379' MSL.

Rwy 33: Trees beginning 359' from DER, 318' right of centerline, up to 100' AGL/2409' MSL.

NOTE: Chart not to scale.



DEPARTURE ROUTE DESCRIPTION

TAKE-OFF RUNWAY 5 and 15: Turn right heading 240° to intercept JST R-222, Thence . . .

TAKE-OFF RUNWAY 23: Climb heading 226° to intercept JST R-222, Thence . . .

TAKE-OFF RUNWAY 33: Turn left heading 200° to intercept JST R-222, Thence . . .

. . . via JST R-222 to cross JENER/JST 16 DME at or above 5000.
Thence via (assigned route).

JENER THREE DEPARTURE