

LOC I-JST 110.1	APP CRS 334°	Rwy Idg TDZE Apt Elev	7003 2281 2284
---------------------------	------------------------	-----------------------------	---

JOHNSTOWN /
JOHN MURTHA JOHNSTOWN-CAMBRIA COUNTY (JST)

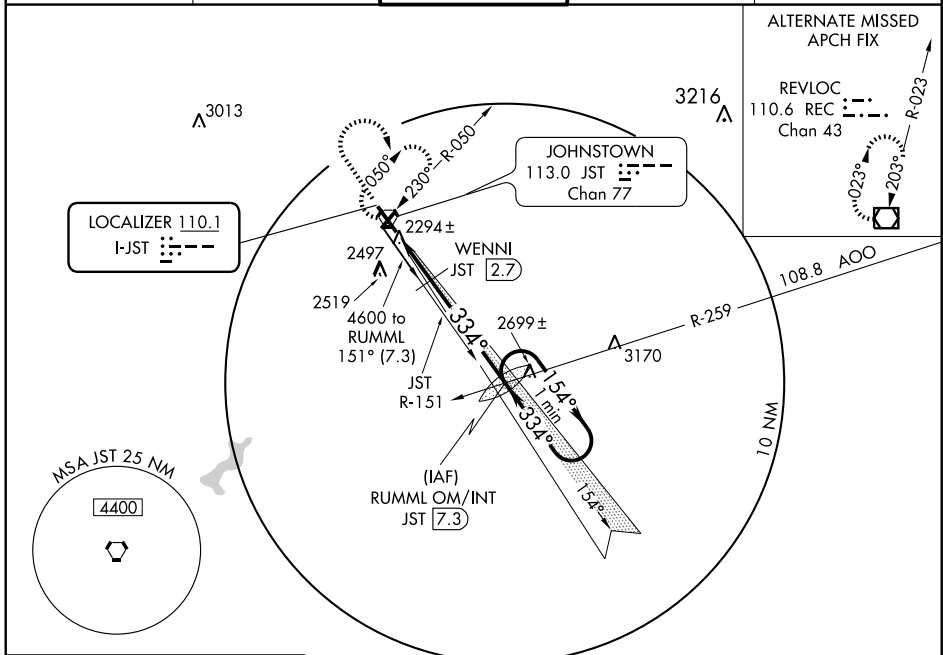
ILS or LOC RWY 33

▼ For inoperative MALSR, increase WENNI fix minimums
▲ S-LOC 33 Cat. D visibility to 1 mile. Glide slope unusable beyond 5 degrees left of course.

MALSR

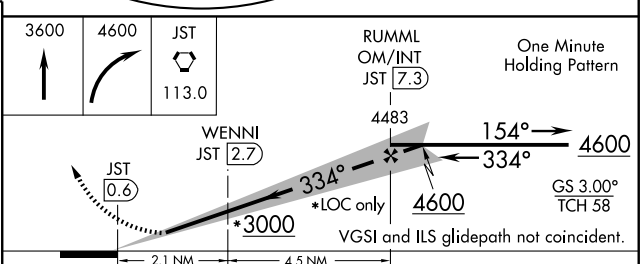
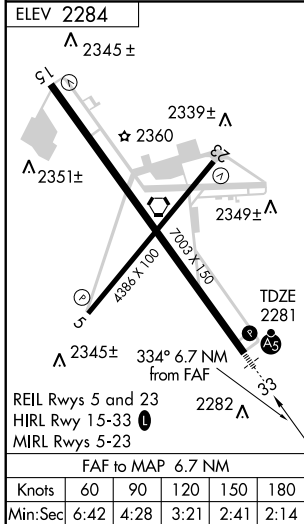
MISSED APPROACH: Climb to 3600 then climbing right turn to 4600 direct JST VORTAC and hold, continue climb-in-hold to 4600.

ATIS 118.325	CLEVELAND CENTER 121.2 299.2	JOHNSTOWN TOWER ★ 125.75 (CTAF) 0	GND CON 121.6	UNICOM 122.95
------------------------	--	--	-------------------------	-------------------------



NE-4, 22 OCT 2009 to 19 NOV 2009

NE-4, 22 OCT 2009 to 19 NOV 2009



CATEGORY	A	B	C	D
S-ILS 33	2481-1/2 200 (200-1/2)			
S-LOC 33	3000-1/2	719 (800-1/2)	3000-1 1/2 719 (800-1 1/2)	3000-1 3/4 719 (800-1 3/4)
CIRCLING	3000-1	716 (800-1)	3000-2 716 (800-2)	3000-2 1/4 716 (800-2 1/4)
WENNI FIX MINIMUMS				
S-LOC 33	2600-1/2 319 (400-1/2)			2600-3/4 319 (400-3/4)
CIRCLING	2660-1 376 (400-1)	2740-1 456 (500-1)	2880-1 1/2 596 (600-1 1/2)	2880-2 596 (600-2)

ILS or LOC RWY 33