

RNAV (GPS) RWY 36

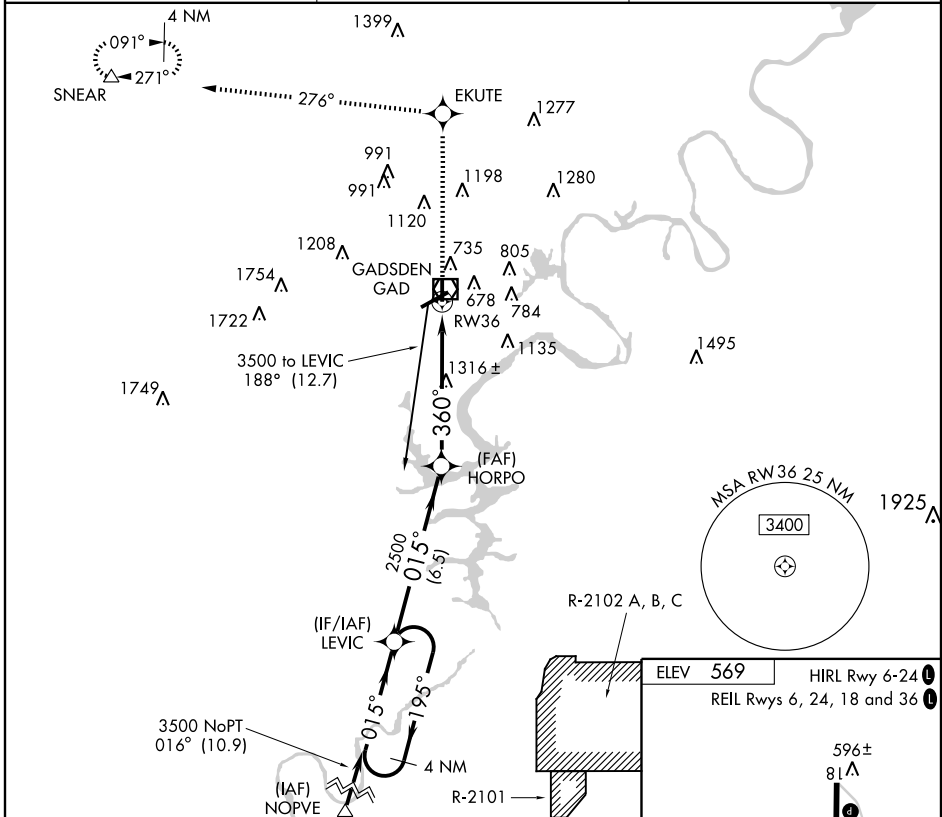
GADSDEN/ NORTHEAST ALABAMA RGNL (GAD)

APP CRS	Rwy Idg	4806
360°	TDZE	555
	Apt Elev	569

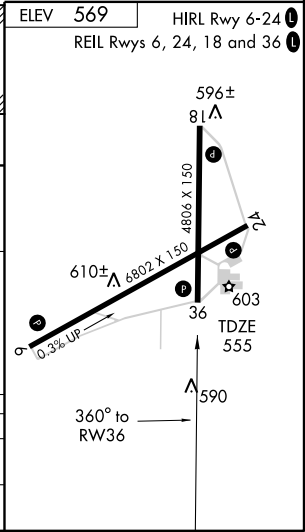
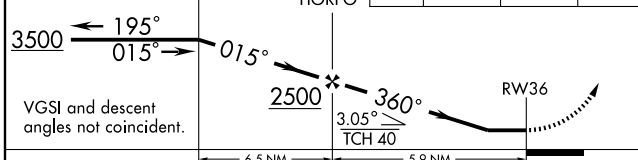
▼ Straight-in minimums NA at night. Circling to Rwy 18/36 NA at night. DME/DME RNP-0.3 NA. Visibility reduction by helicopters NA. When local altimeter setting not received, use Anniston altimeter setting and increase all MDAs 80 feet.

MISSED APPROACH: Climb to 3500 direct EKUTE and via 276° track to SNEAR and hold.

AWOS-3 127.825	BIRMINGHAM APP CON 120.05 257.7	UNICOM 122.8 (CTAF) 1
--------------------------	---	---------------------------------



4 NM Holding Pattern	LEVIC	HORPO	3500	EKUTE	TRK 276°	SNEAR
----------------------	-------	-------	------	-------	----------	-------



CATEGORY	A	B	C	D
RNAV MDA	1580-1¼ 1025 (1100-1¼)	1580-1½ 1025 (1100-1½)	1580-3	1025 (1100-3)
CIRCLING	1580-1¼ 1011 (1100-1¼)	1580-1½ 1011 (1100-1½)	1580-3	1011 (1100-3)

SE-4, 22 OCT 2009 to 19 NOV 2009

SE-4, 22 OCT 2009 to 19 NOV 2009