

RNAV (GPS) RWY 24

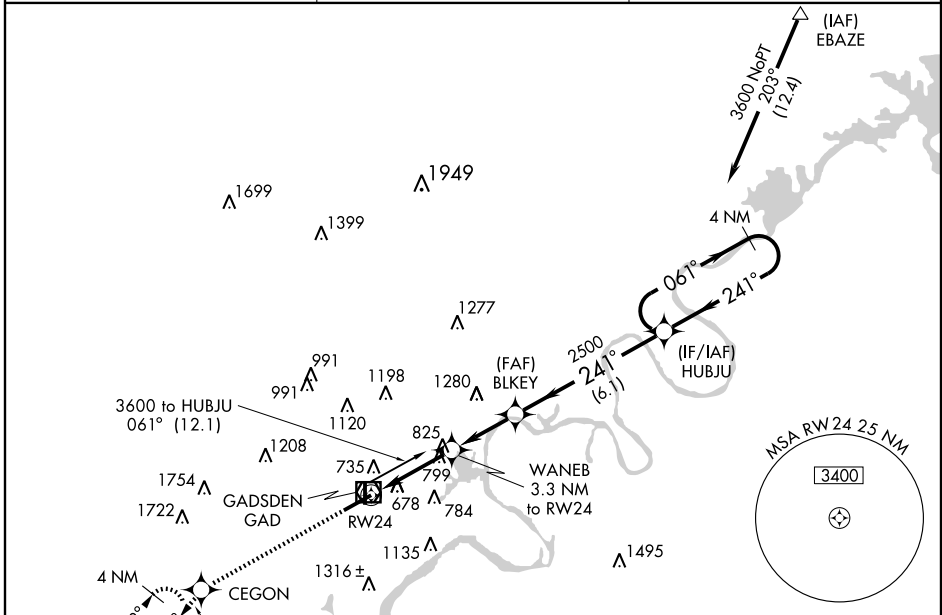
GADSDEN/ NORTHEAST ALABAMA RGNL (GAD)

WAAS CH 65905 W24A	APP CRS 241°	Rwy Idg TDZE Apt Elev	6802 560 569
--	------------------------	-----------------------------	---

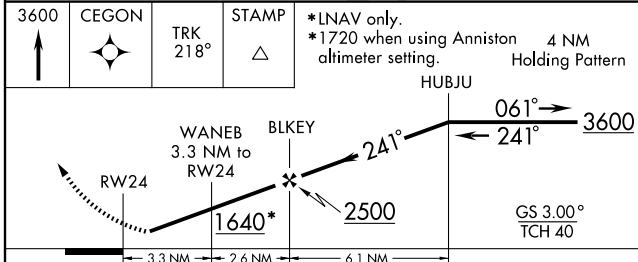
▼ Circling to Rwy 18/36 NA at night. Baro-VNAV NA when using Anniston altimeter setting. For uncompensated Baro-VNAV systems, LNAV/VNAV NA below -16° C (4° F) or above 48° C (118° F). DME/DME RNP-0.3 NA. Visibility reduction by helicopters NA.
▲ When local altimeter setting not received, use Anniston altimeter setting and increase LPV DA to 918, LNAV/VNAV DA to 1145, and all MDAs 80 feet; increase LPV all Cats, LNAV Cat. C and D, and Circling Cat. C visibility ¼ mile.

MISSED APPROACH: Climb to 3600 direct CEGON and via 218° track to STAMP and hold, continue climb-in-hold to 3600.

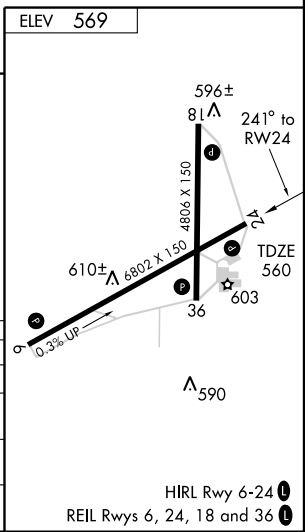
AWOS-3 127.825	BIRMINGHAM APP CON 120.05 257.7	UNICOM 122.8 (CTAF)
--------------------------	---	-------------------------------



3600 ↑	CEGON ✦	TRK 218°	STAMP △	*LNAV only. *1720 when using Anniston 4 NM altimeter setting. Holding Pattern
-----------	------------	-------------	------------	---



CATEGORY	A	B	C	D
LPV DA	852-1 292 (300-1)			
LNAV/VNAV DA	1079-2 519 (600-2)			
LNAV MDA	1060-1 500 (500-1)	1060-1¼ 500 (500-1¼)		1060-1½ 500 (500-1½)
CIRCLING	1100-1 531 (600-1)	1100-1½ 531 (600-1½)		1120-2 551 (600-2)



SE-4, 22 OCT 2009 to 19 NOV 2009

SE-4, 22 OCT 2009 to 19 NOV 2009