

RNAV (GPS) RWY 18

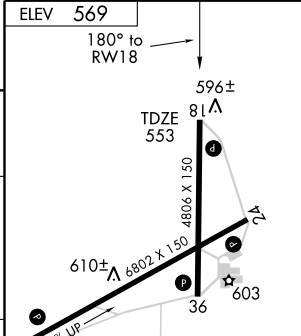
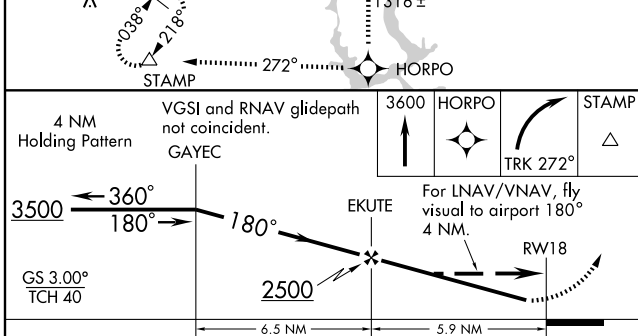
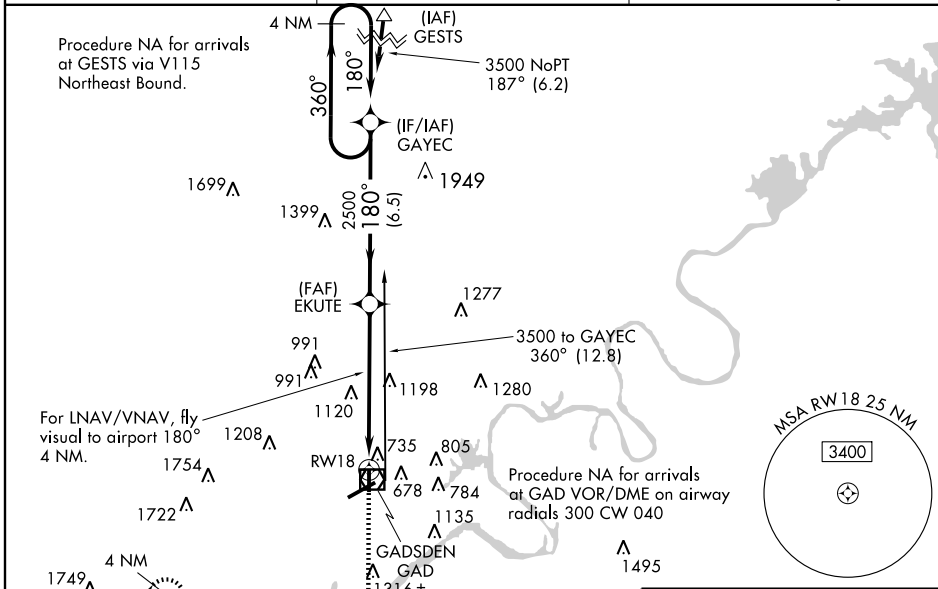
GADSDEN/ NORTHEAST ALABAMA RGNL (GAD)

WAAS CH 90500 W18A	APP CRS 180°	Rwy Idg 4806 TDZE 553 Apt Elev 569
--	------------------------	---

Straight-in minimums NA at night. Circling to Rwy 18/36 NA at night. Baro-VNAV NA when using Annonin altimeter setting. For uncompensated Baro-VNAV systems, LNAV/VNAV NA below -16°C (4°F) or above 48°C (118°F).
 ⚠ DME/DME RNP-0.3 NA. Visibility reduction by helicopters NA. When local altimeter setting not received, use Annonin altimeter setting and increase LPV DA to 1033, LNAV/VNAV DA to 1917, and all MDAs 80 feet; increase LPV visibility all Cats. ¼ mile, increase LNAV and Circling Cat. B & C visibility ¼ mile.

MISSED APPROACH: Climb to 3600 direct HORPO and right turn via 272° track to STAMP and hold, continue climb-in-hold to 3600.

AWOS-3 127.825	BIRMINGHAM APP CON 120.05 257.7	UNICOM 122.8 (CTAF) 1
--------------------------	---	---------------------------------



CATEGORY	A	B	C	D
LPV DA	967-1½ 414 (400-1½)			
LNAV/VNAV DA	1851-2	1298 (1300-2)	1851-3	1298 (1300-3)
LNAV MDA	1500-1¼	947 (1000-1¼)	1500-2¾ 947 (1000-2¾)	1500-3 947 (1000-3)
CIRCLING	1500-1¼	931 (1000-1¼)	1500-2¾ 931 (1000-2¾)	1500-3 931 (1000-3)

HIRL Rwy 6-24 1

REIL Rws 6, 24, 18 and 36 1

SE-4, 22 OCT 2009 to 19 NOV 2009

SE-4, 22 OCT 2009 to 19 NOV 2009