

HANCOCK, MICHIGAN

AL-896 (FAA)

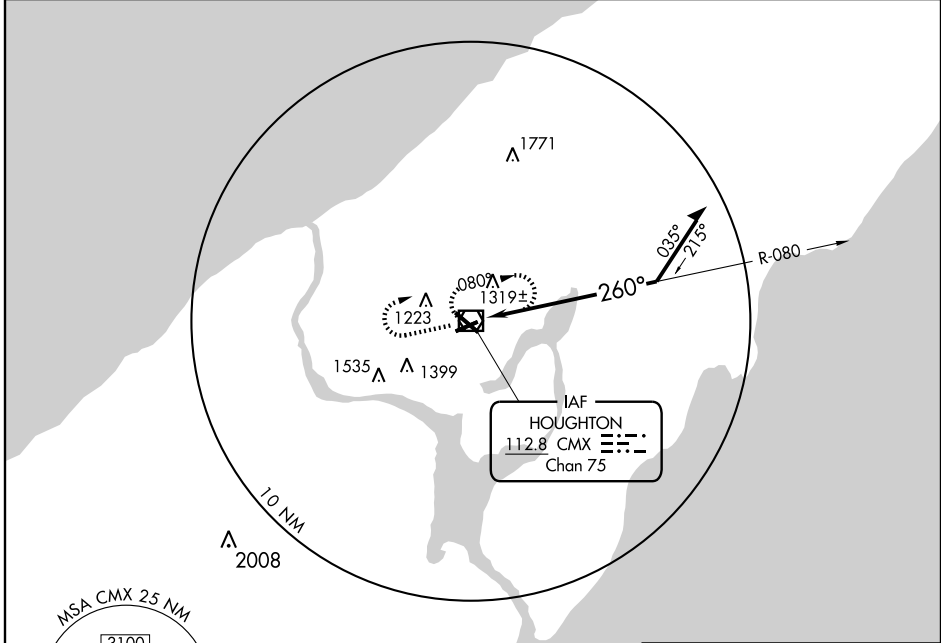
VOR RWY 25

HANCOCK / HOUGHTON COUNTY MEMORIAL (CMX)

VOR/DME CMX	APP CRS	Rwy Idg	5196
112.8	260°	TDZE	1074
Chan 75		Apt Elev	1095

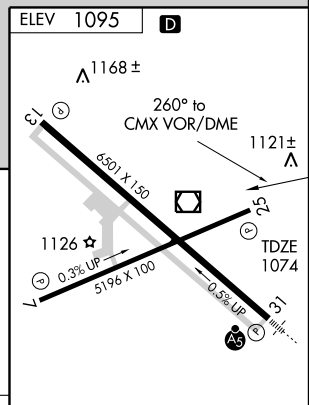
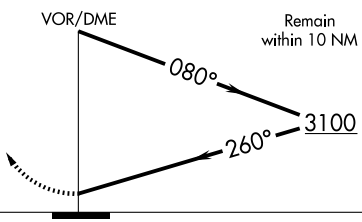
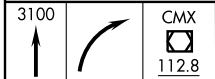
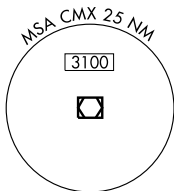
⚠ MISSED APPROACH: Climb to 3100, then right turn direct CMX VOR/DME and hold.

ASOS 125.675	MINNEAPOLIS CENTER 127.2 379.1	UNICOM 122.7 (CTAF) 0
------------------------	--	---------------------------------



EC-1, 22 OCT 2009 to 19 NOV 2009

EC-1, 22 OCT 2009 to 19 NOV 2009



CATEGORY	A	B	C	D
S-25	1620-1	546 (600-1)	1620-1½ 546 (600-1½)	1620 1¾ 546 (600-1¾)
CIRCLING	1620-1 525 (600-1)	1640-1 545 (600-1)	1640-1½ 545 (600-1½)	1780-2¼ 685 (700-2¼)

MIRL Rwy 7-25
REIL Rwy 13 and 25
HIRL Rwy 13-31

HANCOCK, MICHIGAN
Amdt 17B 09295

HANCOCK / HOUGHTON COUNTY MEMORIAL (CMX)
47°10'N - 88°29'W
VOR RWY 25