

HANCOCK, MICHIGAN

AL-896 (FAA)

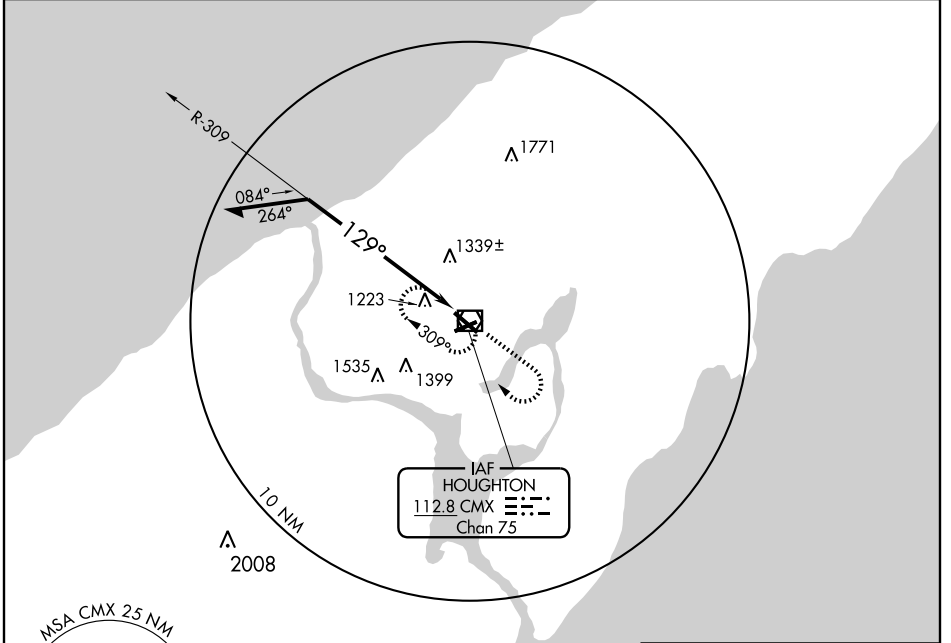
VOR/DME CMX <b>112.8</b> Chan 75	APP CRS <b>129°</b>	Rwy Idg TDZE Apt Elev	<b>6501</b> <b>1095</b> <b>1095</b>
--	------------------------	-----------------------------	---

# VOR RWY 13

HANCOCK / HOUGHTON COUNTY MEMORIAL (CMX)

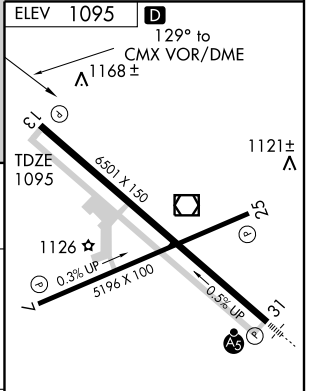
**▼** MISSED APPROACH: Climb to 2700, then climbing right turn to 2900 direct CMX VOR/DME and hold.

ASOS <b>125.675</b>	MINNEAPOLIS CENTER <b>127.2 379.1</b>	UNICOM <b>122.7 (CTAF) 0</b>
------------------------	--	---------------------------------



EC-1, 22 OCT 2009 to 19 NOV 2009

EC-1, 22 OCT 2009 to 19 NOV 2009



Remain within 10 NM	VOR/DME	2700	2900	CMX 112.8
309°	129°	↑	↷	☐
2900	CMX 2.2			
	1.6 NM			

CATEGORY	A	B	C	D
S-13	1640-1	545 (600-1)	1640-1½ 545 (600-1½)	1640-1¾ 545 (600-1¾)
CIRCLING	1640-1	545 (600-1)	1640-1½ 545 (600-1½)	1700-2 605 (700-2)

MIRL Rwy 7-25  
REIL Rws 13 and 25 0  
HIRL Rwy 13-31 0

HANCOCK, MICHIGAN  
Amdt 16 09295

HANCOCK / HOUGHTON COUNTY MEMORIAL (CMX)  
47°10'N - 88°29'W

# VOR RWY 13