

HANCOCK, MICHIGAN

AL-896 (FAA)

RNAV (GPS) RWY 31

HANCOCK/HOUGHTON COUNTY MEMORIAL (CMX)

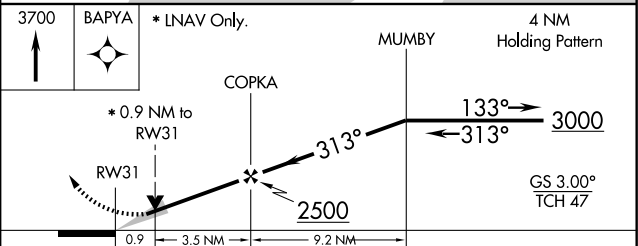
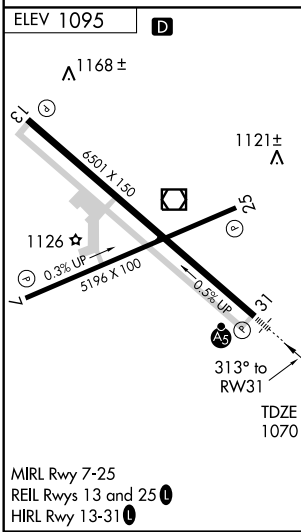
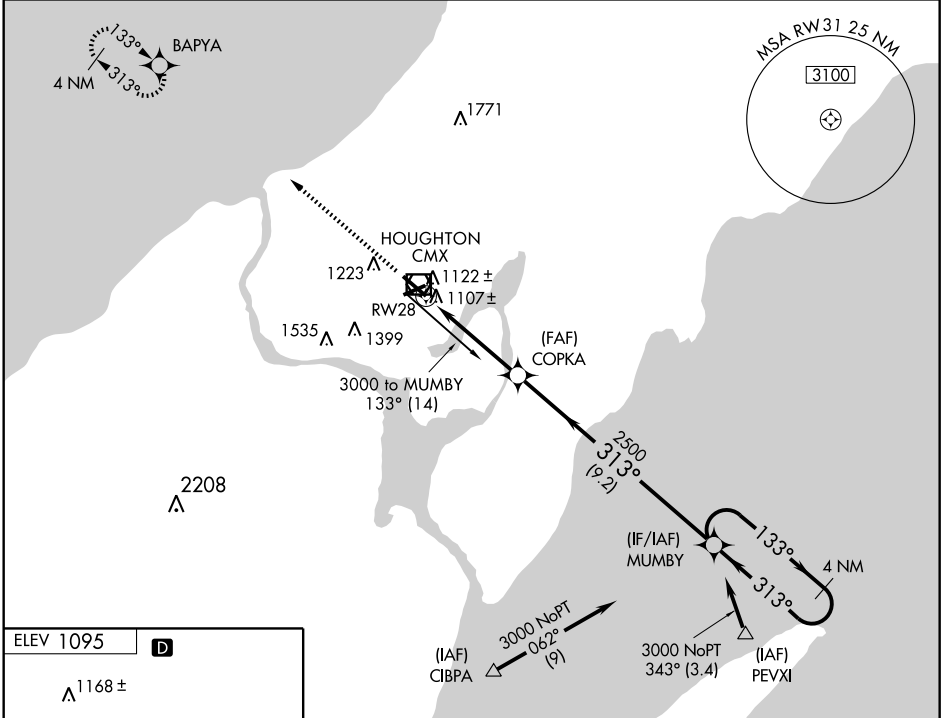
WAAS CH 45809 W31A	APP CRS 313°	Rwy Idg 6501 TDZE 1070 Apt Elev 1095
--	------------------------	---

⚠ For uncompensated Baro-VNAV systems, LNAV/VNAV NA below -17°C (2°F) or above 46°C (114°F). DME/DME RNP-0.3 NA. For inoperative MALSR, increase LPV visibility all Cats to 1 mile, increase LNAV/VNAV Cat D visibility to 1 mile. Inoperative table does not apply to LNAV Cat D.



MISSED APPROACH:
Climb to 3700 direct BAPYA and hold.

ASOS 125.675	MINNEAPOLIS CENTER 127.2 379.1	UNICOM 122.7 (CTAF) Ⓛ
------------------------	--	--



CATEGORY	A	B	C	D
LPV DA	1320-½ 250 (300-½)			
LNAV/VNAV DA	1367-½	297 (300-½)	1367-¾ 297 (300-¾)	
LNAV MDA	1380-½	310 (300-½)	1380-1 310 (300-1)	
CIRCLING	1620-1 525 (600-1)	1640-1 545 (600-1)	1640-1½ 545 (600-1½)	1780-2¼ 685 (700-2¼)

HANCOCK, MICHIGAN
Orig 09295

HANCOCK/HOUGHTON COUNTY MEMORIAL (CMX)
47°10'N - 88°29'W
RNAV (GPS) RWY 31

EC-1, 22 OCT 2009 to 19 NOV 2009

EC-1, 22 OCT 2009 to 19 NOV 2009