

RNAV (GPS) RWY 25

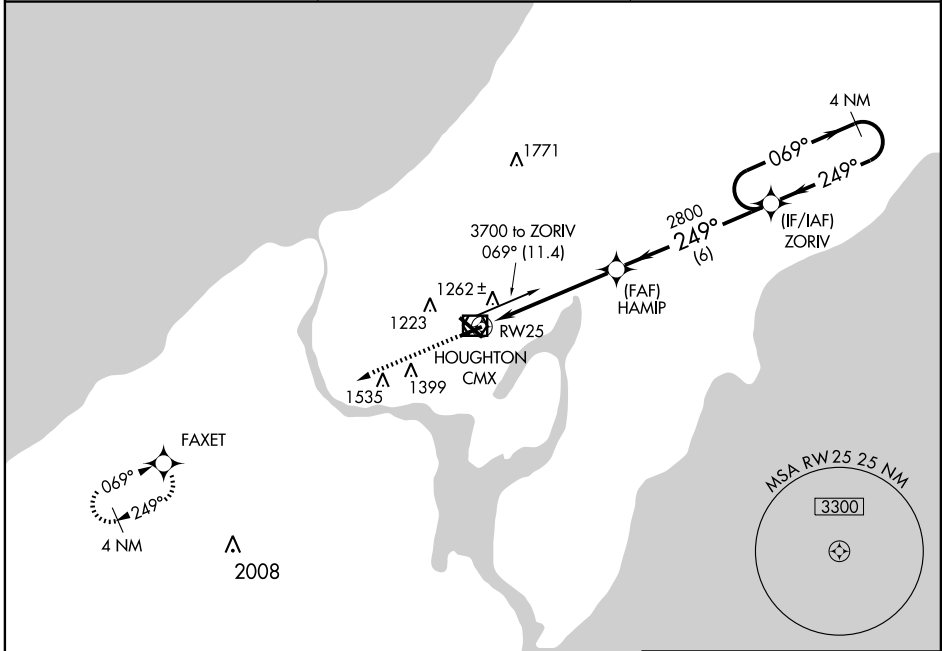
HANCOCK/HOUGHTON COUNTY MEMORIAL (CMX)

APP CRS 249°	Rwy Idg 5196
	TDZE 1074
	Apt Elev 1095

▼ Baro-VNAV NA below -17°C (2°F)
▲ NA GPS or RNP -0.3 required.
 DME/DME RNP -0.3 NA.

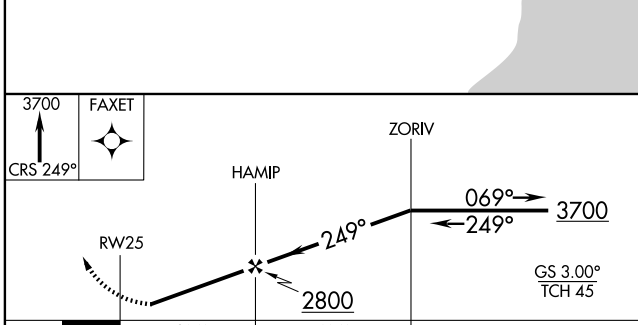
MISSED APPROACH: Climb to 3700 via 249° course to FAXET WP and hold.

ASOS 125.675	MINNEAPOLIS CENTER 127.2 379.1	UNICOM 122.7 (CTAF) ①
------------------------	--	---------------------------------

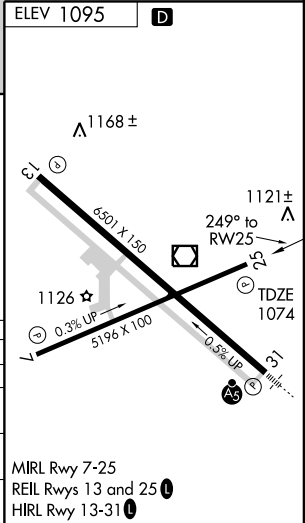


EC-1, 22 OCT 2009 to 19 NOV 2009

EC-1, 22 OCT 2009 to 19 NOV 2009



CATEGORY	A	B	C	D
GLS DA	NA			
LNAV/VNAV DA	1520-1½ 446 (500-1½)			
LNAV MDA	1520-1 446 (500-1)	1520-1¼ 446 (500-1¼)	1520-1½ 446 (500-1½)	1700-2 605 (700-2)
CIRCLING	1580-1½ 485 (500-1½)			



RNAV (GPS) RWY 25

MIRL Rwy 7-25
 REIL Rwys 13 and 25 ①
 HIRL Rwy 13-31 ①