

LOC/DME I-CMX 110.3 Chan 40	APP CRS 133°	Rwy Idg 6501 TDZE 1095 Apt Elev 1095
--	------------------------	---

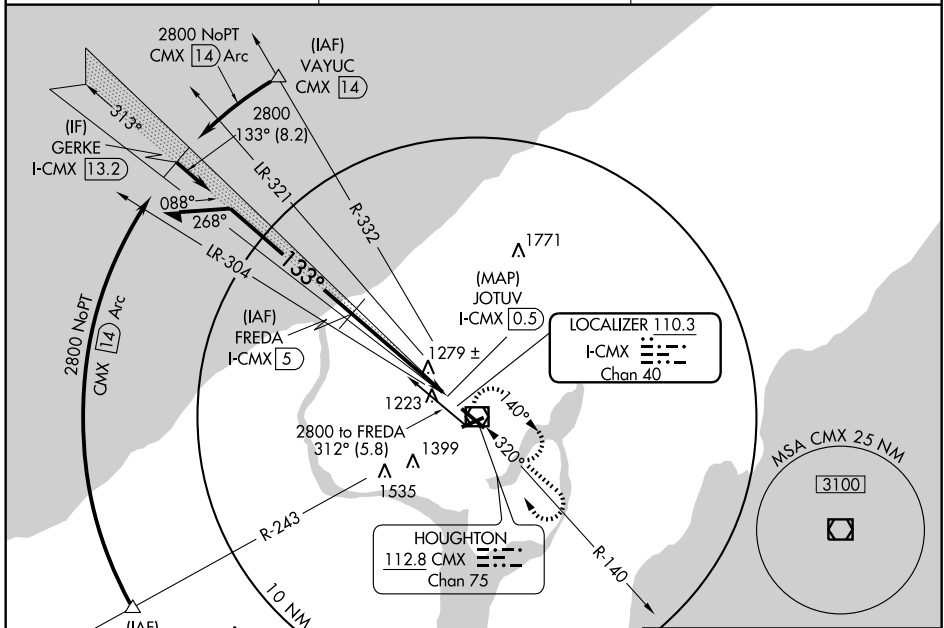
LOC/DME BC RWY 13

HANCOCK / HOUGHTON COUNTY MEMORIAL (CMX)

Request MIRL Rwy 7-25 CTAF.
 When local altimeter setting not received use Marquette altimeter setting and increase all MDA 180 feet and S-13 Cat C and D visibility 1/2 mile, increase Circling visibility Cat C and D 1/2 mile. VDP NA when using Marquette altimeter setting.

MISSED APPROACH: Climb to 3100 then right turn direct CMX VOR/DME and hold.

ASOS 125.675	MINNEAPOLIS CENTER 127.2 379.1	UNICOM 122.7 (CTAF) 0
------------------------	--	---------------------------------



EC-1, 22 OCT 2009 to 19 NOV 2009

BACK COURSE

Remain within 10 NM 2800 — 133° — 2800 313° — FREDIA I-CMX 5 Use I-CMX DME when on localizer course. Disregard glide slope indications. 3.04° TCH 43 3.9 NM 0.6 0.7	3100 CMX 112.8	ELEV 1095 TDZE 1095 1126 ☆ 5196 X 100 0.3% UP 0.5% UP		
			1168 ± 1121 ±	
CATEGORY	A	B	C	D
S-13	1540-1	445 (500-1)	1540-1 1/4 445 (500-1 1/4)	1540-1 1/2 445 (500-1 1/2)
CIRCLING	1620-1 525 (600-1)	1640-1 545 (600-1)	1640-1 1/2 545 (600-1 1/2)	1780-2 1/4 685 (700-2 1/4)

MIRL Rwy 7-25
 REIL Rwy 13 and 25
 HIRL Rwy 13-31