

ILS or LOC RWY 31

HANCOCK / HOUGHTON COUNTY MEMORIAL (CMX)

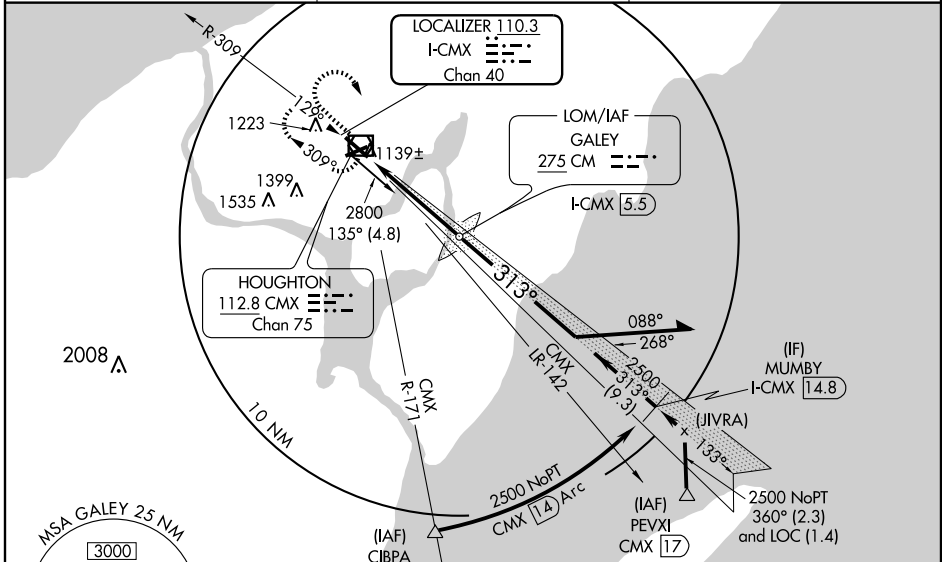
LOC/DME I-CMX 110.3 Chan 40	APP CRS 313°	Rwy Idg 6501	TDZE 1070
		Apt Elev 1095	

▼ For inoperative MALSR, increase S-LOC 31 Cat D visibility to 1 mile.
 ▲ When local altimeter setting not received use Marquette altimeter setting and increase DA to 1441 and S-ILS 31 visibility to ¾, increase all MDA 180' and S-LOC 31 visibility Cat C to ¾ mile, Cat D to 1 mile. Increase Circling Cat C visibility to 1¾ mile, Cat D visibility to 2½ mile. For inoperative MALSR when using Marquette altimeter setting increase S-ILS 31 visibility all Cats to 1¼ mile.
 VDP NA when using Marquette altimeter setting. Request MIRL Rwy 7-25 CTAf.

MALSR

MISSED APPROACH:
 Climb to 3100 then right turn direct CMX VOR/DME and hold.

ASOS 125.675	MINNEAPOLIS CENTER 127.2 379.1	UNICOM 122.7 (CTAF) 0
------------------------	--	---------------------------------



ADF or DME REQUIRED

3100 ↑ CMX 112.8

GALEY LOM I-CMX 5.5

Remain within 10 NM

2494 133° 2800 GS 3.00° TCH 47

2500 Use I-CMX DME when on localizer course.

0.9 3.4 NM

ELEV 1095 **D**

▲ 1168 ±

1121 ± ▲

1126 ☆

0.3% UP 5196 X 100

0.5% UP

TDZE 1070

MIRL Rwy 7-25

REIL Rws 13 and 25 313° 4.3 NM from FAF

HIRL Rwy 13-31 1

FAF to MAP 4.3 NM

Knots	60	90	120	150	180
Min:Sec	4:18	2:52	2:09	1:43	1:26

CATEGORY	A	B	C	D
S-ILS 31	1 270-½ 200 (200-½)			
S-LOC 31	1 400-½ 330 (400-½)		1 400-¾ 330 (400-¾)	
CIRCLING	1 620-1 525 (600-1)	1 640-1 545 (600-1)	1 640-1½ 545 (600-1½)	1 780-2¼ 685 (700-2¼)

EC-1, 22 OCT 2009 to 19 NOV 2009

EC-1, 22 OCT 2009 to 19 NOV 2009