

VOR/DME RWY 32

SMYRNA (MQY)

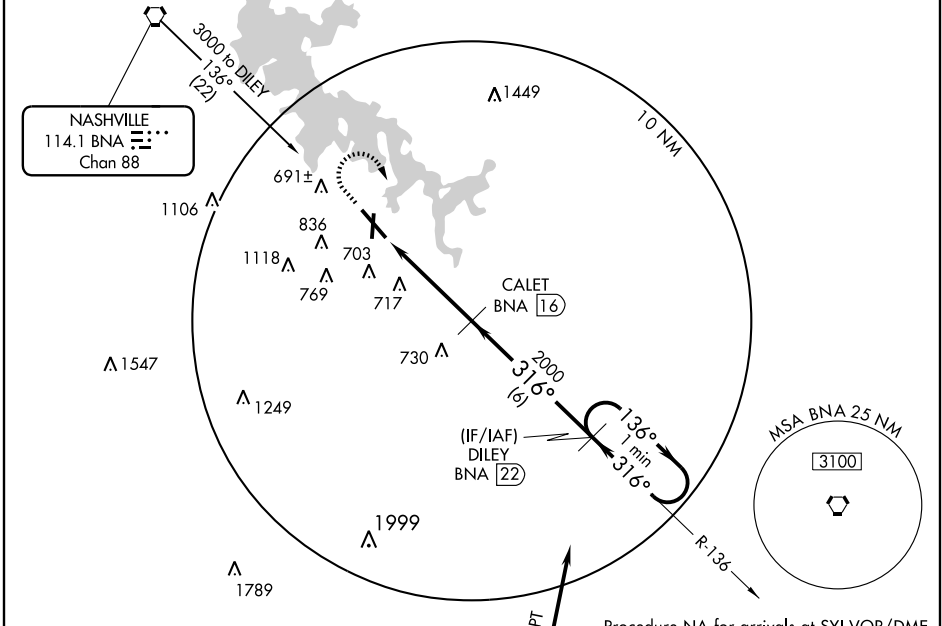
VORTAC BNA 114.1 Chan 88	APP CRS 316°	Rwy Idg TDZE 517 Apt Elev 543	8037
--	------------------------	---	-------------

When local altimeter setting not received, use Nashville Intl altimeter setting and increase all MDA 40 feet, S-32 Cat. C visibility ¼ mile and Circling Cat. C visibility ¼ mile. VDP NA when using Nashville Intl altimeter setting.

MALSR
AS 5

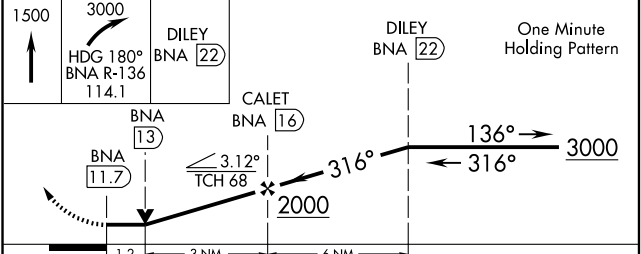
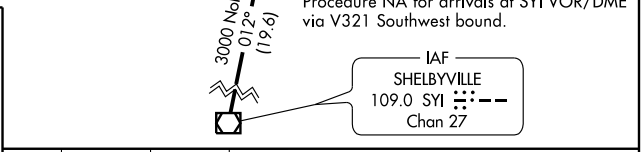
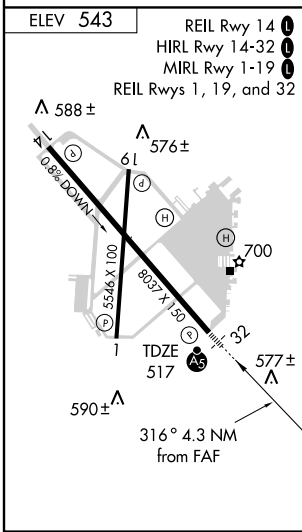
MISSED APPROACH: Climb to 1500 then climbing right turn to 3000 via heading 180° and BNA R-136 to DILEY 22 DME and hold.

ASOS 119.125	NASHVILLE APP CON 118.4 360.7	SMYRNA TOWER ★ 118.5 (CTAF) 233.1	GND CON 121.4	CLNC DEL 121.4	NASHVILLE CLNC DEL 121.7 (When tower closed)	UNICOM 122.95
------------------------	---	---	-------------------------	--------------------------	---	-------------------------



SE-1, 22 OCT 2009 to 19 NOV 2009

SE-1, 22 OCT 2009 to 19 NOV 2009



CATEGORY	A	B	C	D
S-32	980-½ 463 (500-½)		980-¾ 463 (500-¾)	980-1 463 (500-1)
CIRCLING	1080-1 537 (600-1)		1120-1½ 577 (600-1½)	1160-2 617 (700-2)