

VOR/DME RWY 14

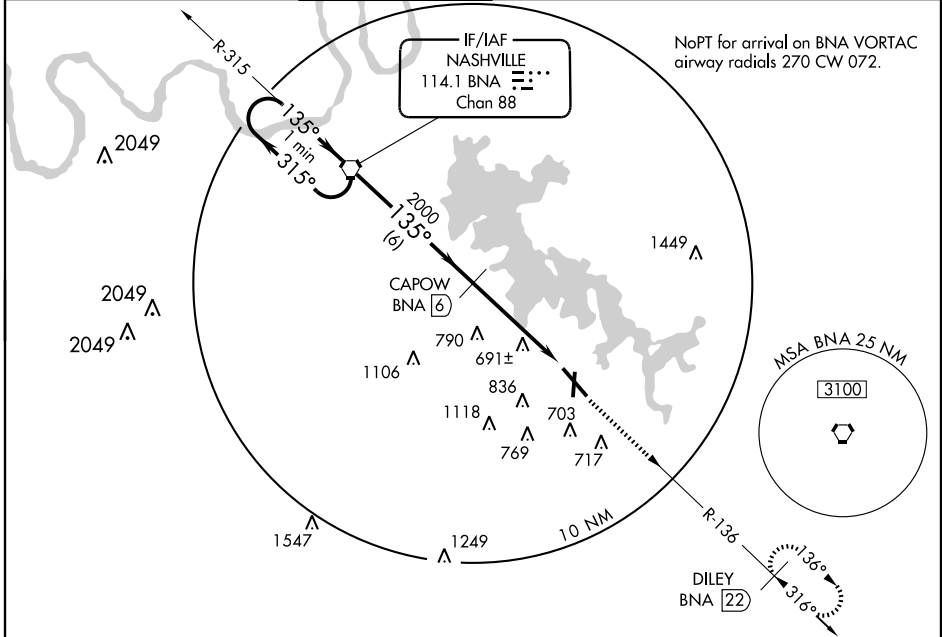
SMYRNA (MQY)

VORTAC BNA 114.1 Chan 88	APP CRS 135°	Rwy Idg 8037 TDZE 543 Apt Elev 543
----------------------------------------------	------------------------	---------------------------------------------------------------

▼ Visibility reduction by helicopters NA. When local altimeter setting not received, use Nashville Intl altimeter setting and increase all MDA 40 feet, increase S-14 Cat. C/D and Circling Cat. C visibility ¼ mile. VDP NA when using Nashville Intl altimeter setting.

▲ MISSED APPROACH: Climb to 3000 via BNA VORTAC R-136 to DILEY 22 DME and hold.

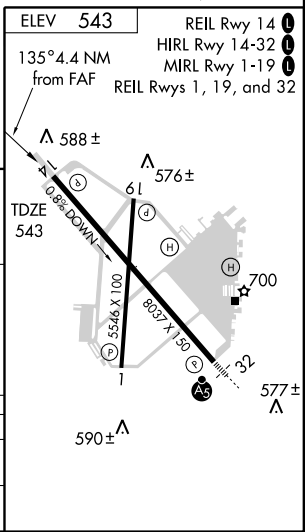
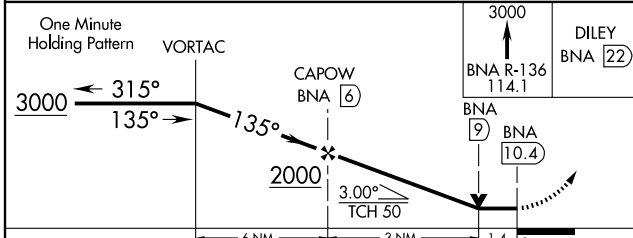
ASOS 119.125	NASHVILLE APP CON 118.4 360.7	SMYRNA TOWER ★ 118.5 (CTAF) 233.1	GND CON 121.4	CLNC DEL 121.4	NASHVILLE CLNC DEL 121.7 (When tower closed)	UNICOM 122.95
------------------------	-----------------------------------------	---------------------------------------------	-------------------------	--------------------------	-----------------------------------------------------------	-------------------------



SE-1, 22 OCT 2009 to 19 NOV 2009

SE-1, 22 OCT 2009 to 19 NOV 2009

Maximum holding airspeed 200 KIAS.



CATEGORY	A	B	C	D
S-14	1040-1	497 (500-1)	1040-1½ 497 (500-1½)	1040-1½ 497 (500-1½)
CIRCLING	1080-1	537 (600-1)	1120-1½ 577 (600-1½)	1160-2 617 (700-2)