


RNAV (GPS) RWY 32

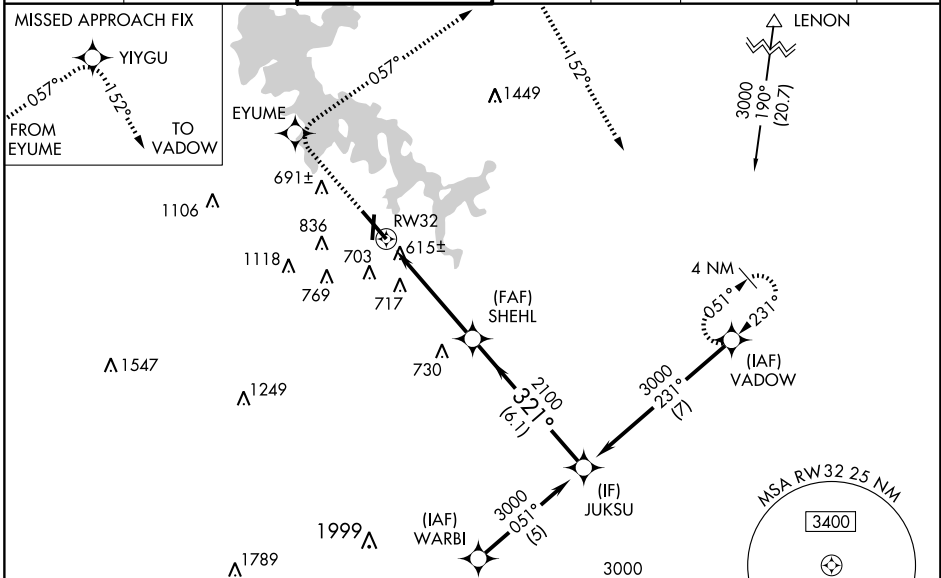
SMYRNA (MQY)

WAAS CH 93512 W32A	APP CRS 321°	Rwy Idg TDZE 517 Apt Elev 543	8037
--	------------------------	---	-------------

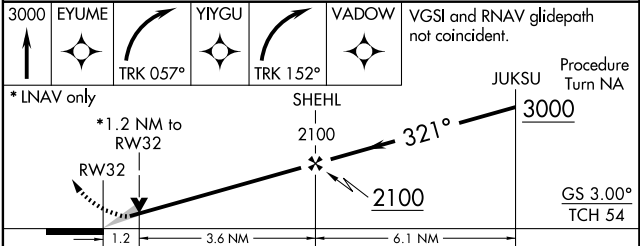
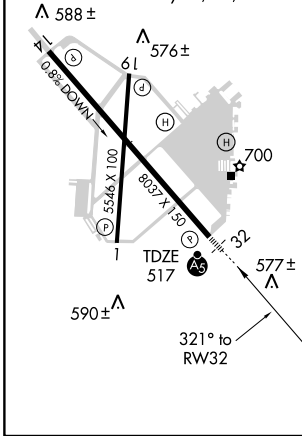
For inoperative MALSR, increase LPV all Cats. visibility to 1 mile. For uncompensated Baro-VNAV systems, LNAV/VNAV NA below -16°C (4°F) or above 47°C (116°F).
 ▼ DME/DME RNP-0.3 NA. Baro-VNAV and VDP NA when using Nashville Intl altimeter setting. When local altimeter setting not received, use Nashville Intl altimeter setting and increase LPV DA to 872 feet, LNAV/VNAV DA to 1047 feet, and all MDA 40 feet; increase LPV visibility ¼ mile all Cats., and Circling visibility Cat. C ¼ mile. For inoperative MALSR when using Nashville Intl altimeter setting, increase LPV visibility to 1½ mile all Cats.

MALSR

 MISSED APPROACH: Climb to 3000 direct EYUME and right turn via 057° track to YYYGU and right turn via 152° track to VADOW and hold.

ASOS 119.125	NASHVILLE APP CON 118.4 360.7	SMYRNA TOWER ★ 118.5 (CTAF) 0 233.1	GND CON 121.4	CLNC DEL 121.4	NASHVILLE CLNC DEL 121.7 (When tower closed)	UNICOM 122.95
------------------------	---	---	-------------------------	--------------------------	---	-------------------------



ELEV 543	REIL Rwy 14
	HIRL Rwy 14-32
	MIRL Rwy 1-19
	REIL Rws 1, 19, and 32



CATEGORY	A	B	C	D
LPV DA	840-½		323 (400-½)	
LNAV/VNAV DA	1015-1¼		498 (500-1¼)	
LNAV MDA	960-½	443 (500-½)	960-¾ 443 (500-¾)	960-1 443 (500-1)
CIRCLING	1080-1	537 (600-1)	1120-1½ 577 (600-1½)	1160-2 617 (700-2)

SE-1, 22 OCT 2009 to 19 NOV 2009

SE-1, 22 OCT 2009 to 19 NOV 2009