

SMYRNA, TENNESSEE

AL-895 (FAA)

# RNAV (GPS) RWY 14

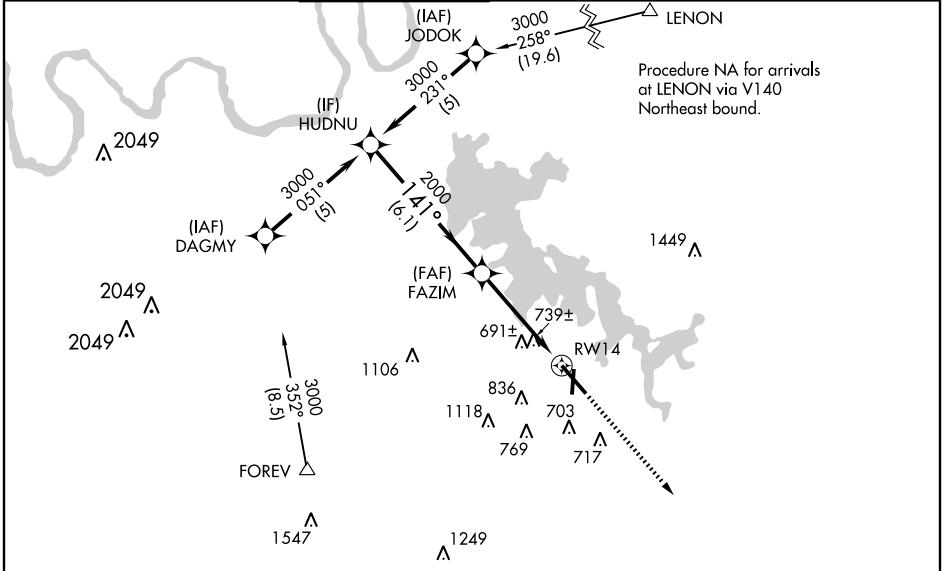
SMYRNA (MQY)

APP CRS	Rwy Idg	<b>8037</b>
<b>141°</b>	TDZE	<b>543</b>
	Apt Elev	<b>543</b>

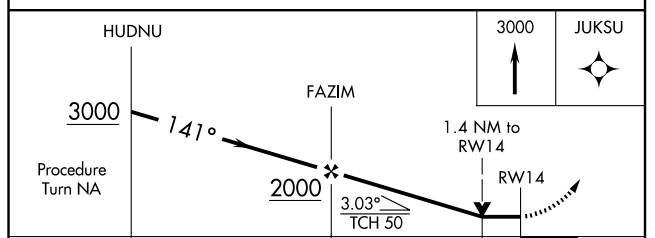
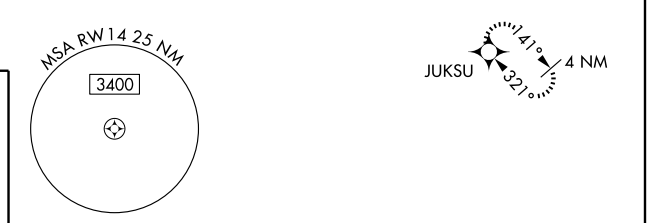
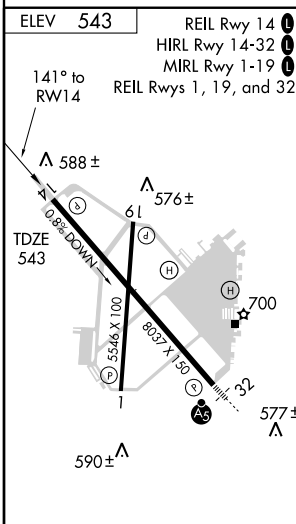
**⚠** DME/DME RNP-0.3 NA. Visibility reduction by helicopters NA. When local altimeter setting not received, use Nashville Intl altimeter setting and increase all MDA 40 feet; increase LNAV Cat. C and D visibilities 1/4 mile and Circling Cat. C visibility 1/4 mile.  
**⚠** VDP NA when using Nashville Intl altimeter setting.

MISSED APPROACH: Climb to 3000 direct JKUSU and hold.

ASOS <b>119.125</b>	NASHVILLE APP CON <b>118.4 360.7</b>	SMYRNA TOWER ★ <b>118.5 (CTAF) 0 233.1</b>	GND CON <b>121.4</b>	CLNC DEL <b>121.4</b>	NASHVILLE CLNC DEL <b>121.7</b> (When tower closed)	UNICOM <b>122.95</b>
------------------------	---	---	-------------------------	--------------------------	---	-------------------------



Procedure NA for arrivals at FOREV via V49 Southwest bound.



CATEGORY	A	B	C	D
LNAV MDA	1040-1	497 (500-1)	1040-1 1/4 497 (500-1 1/4)	1040-1 1/2 497 (500-1 1/2)
CIRCLING	1080-1	537 (600-1)	1120-1 1/2 577 (600-1 1/2)	1160-2 617 (700-2)

SMYRNA, TENNESSEE  
Orig 09127

36°01'N - 86°31'W

# RNAV (GPS) RWY 14

SE-1, 22 OCT 2009 to 19 NOV 2009

SE-1, 22 OCT 2009 to 19 NOV 2009