


NDB RWY 32

SMYRNA (MQY)

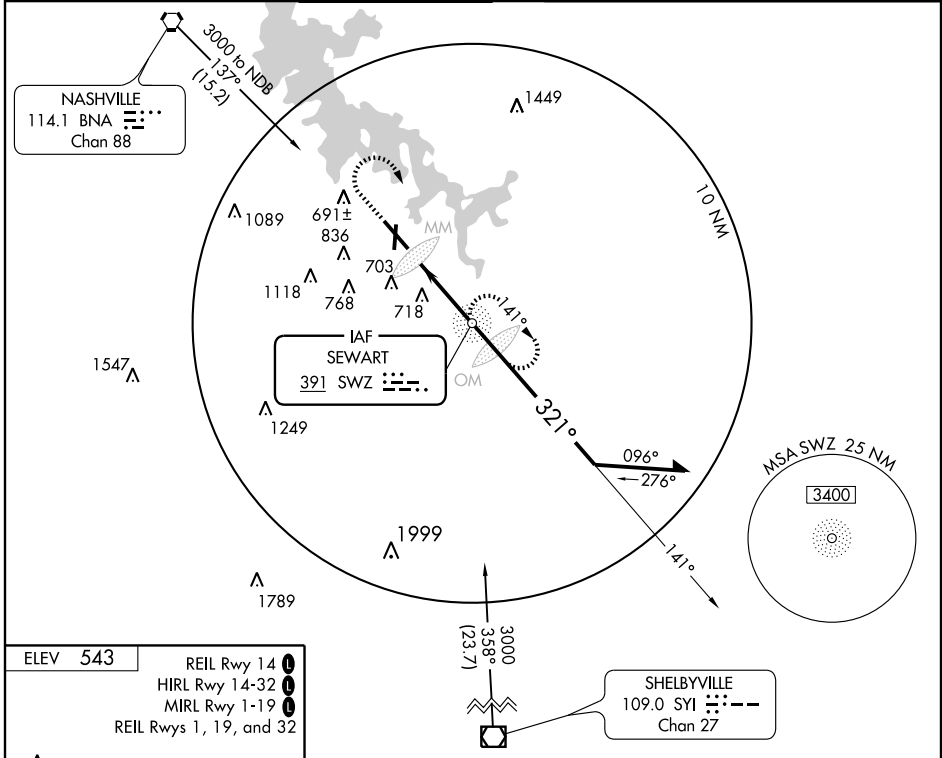
NDB SWZ 391	APP CRS 321°	Rwy Idg 8037
		TDZE 517
		Apt Elev 543

⚠ When local altimeter setting not received, use Nashville Intl altimeter setting and increase all MDA 40 feet, and increase Circling Cat. C visibility ¼ mile.

MALSR 

MISSED APPROACH: Climb to 1500 then climbing right turn to 3000 direct SWZ NDB and hold.

ASOS 119.125	NASHVILLE APP CON 118.4 360.7	SMYRNA TOWER ★ 118.5 (CTAF) 233.1	GND CON 121.4	CLNC DEL 121.4	NASHVILLE CLNC DEL 121.7 (When tower closed)	UNICOM 122.95
------------------------	---	---	-------------------------	--------------------------	---	-------------------------



SE-1, 22 OCT 2009 to 19 NOV 2009

ELEV 543	REIL Rwy 14
	HIRL Rwy 14-32
	MIRL Rwy 1-19
	REIL Rwys 1, 19, and 32

