

SMYRNA, TENNESSEE

AL-895 (FAA)

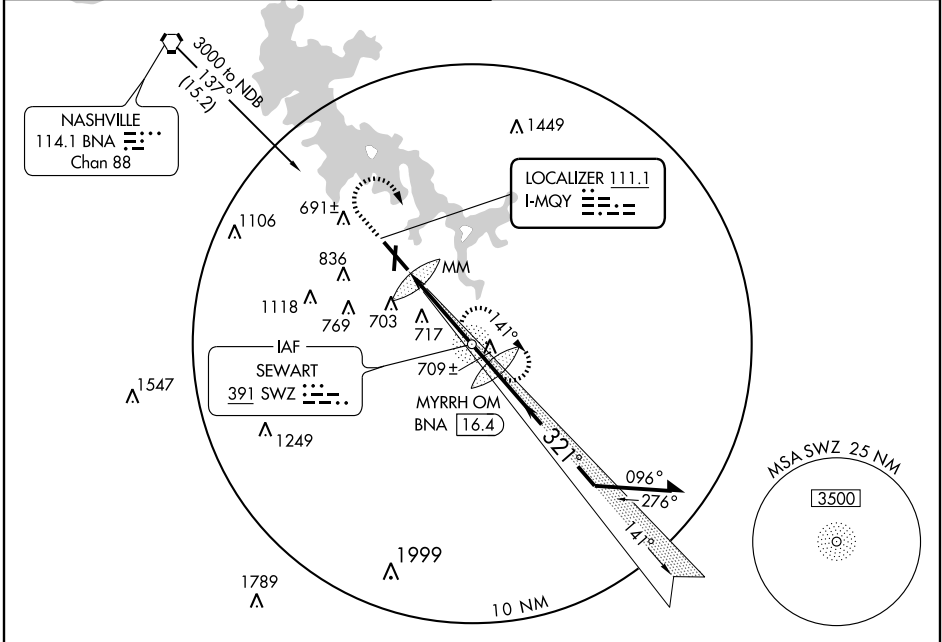
# ILS RWY 32

SMYRNA (MQY)

LOC I-MQY <b>111.1</b>	APP CRS <b>321°</b>	Rwy Idg TDZE Apt Elev	<b>8037</b> <b>517</b> <b>543</b>
---------------------------	------------------------	-----------------------------	---

<p>⚠ Obtain local altimeter setting on CTAF; when not received use Nashville altimeter setting.</p> <p>⚠ ADF REQUIRED</p>	<p>MALSR</p>	<p>MISSED APPROACH: Climb to 1500 then climbing right turn to 3000 direct SWZ NDB and hold.</p>
---	--------------	---

ASOS <b>119.125</b>	NASHVILLE APP CON <b>118.4 360.7</b>	SMYRNA TOWER ★ <b>118.5 (CTAF) 233.1</b>	GND CON <b>121.4</b>	CLNC DEL <b>121.4</b>	NASHVILLE CLNC DEL <b>121.7</b> (When tower closed)	UNICOM <b>122.95</b>
------------------------	---	---	-------------------------	--------------------------	---	-------------------------



SE-1, 22 OCT 2009 to 19 NOV 2009

SE-1, 22 OCT 2009 to 19 NOV 2009

ELEV 543	REIL Rwy 14 HIRL Rwy 14-32 MIRL Rwy 1-19 REIL Rwys 1, 19, and 32	1500 3000 SWZ 391	SWZ NDB	Remain within 10 NM of SWZ NDB																				
<table border="1"> <thead> <tr> <th>CATEGORY</th> <th>A</th> <th>B</th> <th>C</th> <th>D</th> </tr> </thead> <tbody> <tr> <td>S-ILS 32</td> <td colspan="4">717-1/2 200 (200-1/2)</td> </tr> <tr> <td>S-LOC 32</td> <td>960-1/2 443 (500-1/2)</td> <td>960-3/4 443 (500-3/4)</td> <td>960-1 443 (500-1)</td> <td>960-1 443 (500-1)</td> </tr> <tr> <td>CIRCLING</td> <td>1080-1 537 (600-1)</td> <td>1120-1/2 577 (600-1/2)</td> <td>1160-2 617 (700-2)</td> <td>1160-2 617 (700-2)</td> </tr> </tbody> </table>					CATEGORY	A	B	C	D	S-ILS 32	717-1/2 200 (200-1/2)				S-LOC 32	960-1/2 443 (500-1/2)	960-3/4 443 (500-3/4)	960-1 443 (500-1)	960-1 443 (500-1)	CIRCLING	1080-1 537 (600-1)	1120-1/2 577 (600-1/2)	1160-2 617 (700-2)	1160-2 617 (700-2)
CATEGORY	A	B	C	D																				
S-ILS 32	717-1/2 200 (200-1/2)																							
S-LOC 32	960-1/2 443 (500-1/2)	960-3/4 443 (500-3/4)	960-1 443 (500-1)	960-1 443 (500-1)																				
CIRCLING	1080-1 537 (600-1)	1120-1/2 577 (600-1/2)	1160-2 617 (700-2)	1160-2 617 (700-2)																				
NASHVILLE ALTIMETER SETTING MINIMUMS																								
S-ILS 32	816-1/2 299 (300-1/2)																							
S-LOC 32	1060-1/2 543 (600-1/2)	1060-1 543 (600-1)	1060-1 543 (600-1)	1060-1 543 (600-1)																				
CIRCLING	1180-1 637 (700-1)	1220-2 677 (700-2)	1260-2 717 (800-2)	1260-2 717 (800-2)																				

SMYRNA, TENNESSEE  
Amdt 5B 09127

36°01'N-86°31'W

# SMYRNA (MQY)

## ILS RWY 32