

VOR/DME OTK <b>114.8</b> Chan <b>95</b>	APP CRS <b>190°</b>	Rwy Idg <b>8002</b> TDZE <b>198</b> Apt Elev <b>203</b>
---	------------------------	---

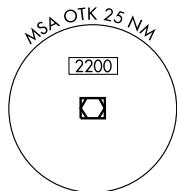
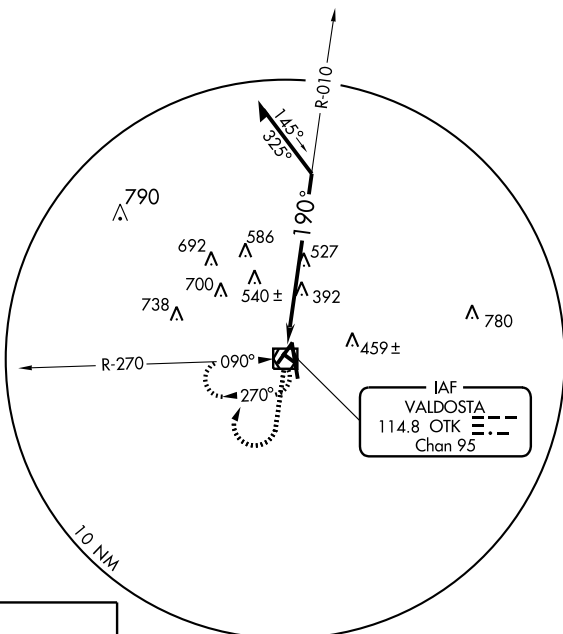
# VOR RWY 17

VALDOSTA RGNL (VLD)

▼ Visibility reduction by helicopters NA.  
 ▼ VDP NA when using Moultrie altimeter setting.  
 ▲ If local altimeter setting not received, use Moultrie altimeter setting and increase all MDAs 100 feet.

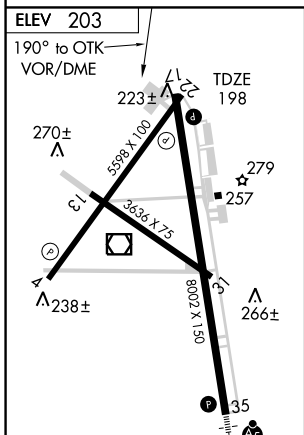
MISSED APPROACH: Climb to 1500 then climbing right turn to 2000 direct OTK VOR/DME and hold, continue climb-in-hold to 2000.

ASOS <b>126.225</b>	VALDOSTA APP CON * <b>126.6 285.6</b>	VALDOSTA TOWER * <b>120.9 (CTAF) 0</b>	GND CON <b>121.7</b>	UNICOM <b>122.95</b>
------------------------	--	---	-------------------------	-------------------------

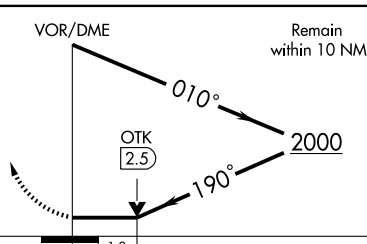
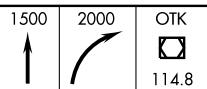


SE-4, 22 OCT 2009 to 19 NOV 2009

SE-4, 22 OCT 2009 to 19 NOV 2009



REIL Rwy 17 **L**  
 HIRL Rwy 17-35 **L**  
 REIL Rwy 4 and 22  
 MIRL Rwy 4-22 and 13-31



CATEGORY	A	B	C	D
S-17	840-1 642 (700-1)		840-1¾ 642 (700-1¾)	840-2 642 (700-2)
CIRCLING	840-1 637 (700-1)		840-1¾ 637 (700-1¾)	840-2 637 (700-2)