


RNAV (GPS) RWY 35

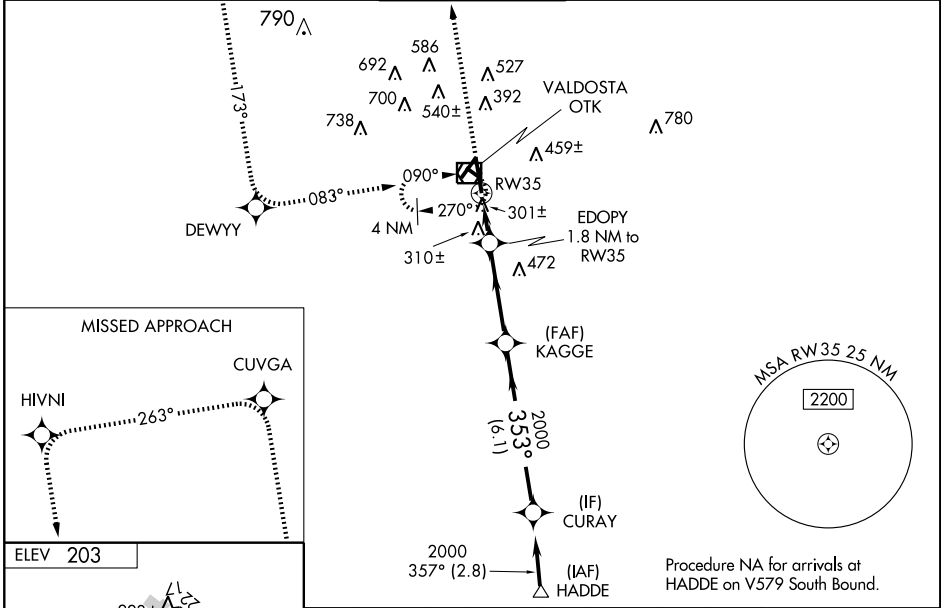
VALDOSTA RGNL (VLD)

WAAS CH 88206 W35A	APP CRS 353°	Rwy Idg TDZE Apt Elev	8002 200 203
--	------------------------	-----------------------------	---

MALSRL

MISSED APPROACH:
 Climb to 2200 direct CUVGA and via 263° track to HIVNI and via 173° track to DEWYY and via 083° track to OTK VOR/DME hold.

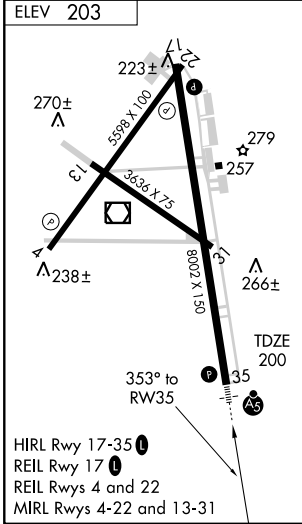
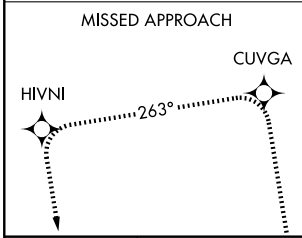
Baro-VNAV NA when using Moultrie altimeter setting. For uncompensated Baro-VNAV systems, procedure NA below -15°C (5°F) or above 48°C (118°F). DME/DME RNP-0.3 NA. Visibility reduction by helicopters NA. When local altimeter setting not received, use Moultrie altimeter setting and increase all DA 88 feet and all MDA 100 feet; increase LPV all Cats visibility ¼ mile, LNAV/VNAV all Cats visibility ½ mile, and Circling Cat D visibility ¼ mile. For inoperative MALSRL, increase LPV all Cats visibility to 1¼ mile, increase LNAV Cats A, B, and C visibility to 1 mile, and increase LNAV Cat D visibility to 1¼ mile. For inoperative MALSRL when using Moultrie altimeter setting, increase LPV all Cats visibility to 1½ mile and LNAV Cats A and B visibility to 1 mile. VDP NA when using Moultrie altimeter setting.

ASOS 126.225	VALDOSTA APP CON * 126.6 285.6	VALDOSTA TOWER * 120.9 (CTAF) 0	GND CON 121.7	UNICOM 122.95
------------------------	--	---	-------------------------	-------------------------



SE-4, 22 OCT 2009 to 19 NOV 2009

SE-4, 22 OCT 2009 to 19 NOV 2009



2200	CUVGA	HIVNI	DEWYY	OTK	Procedure Turn NA
↑	263° TRK	173° TRK	083° TRK	☐	CURAY
*LNAV only.					
EDOPY 1.8 NM to RWY 35		KAGGE		CURAY	
*1 NM to RWY 35		*820		2000	
RWY 35		3.6 NM		6.1 NM	
CATEGORY	A	B	C	D	
LPV DA	560-¾ 360 (400-¾)				
LNAV/VNAV DA	598-¾ 398 (400-¾)				
LNAV MDA	560-¾ 360 (400-¾)			560-1 360 (400-1)	
CIRCLING	640-1 437 (500-1)	660-1 457 (500-1)	660-1½ 457 (500-1½)	780-2 577 (600-2)	