

RNAV (GPS) RWY 17

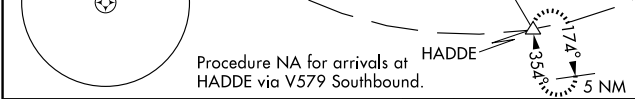
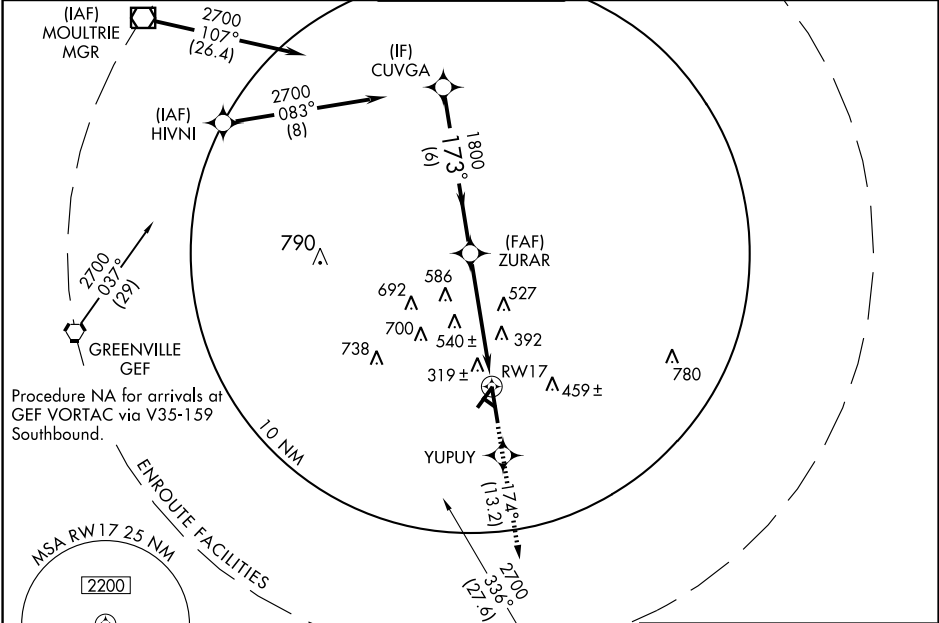
VALDOSTA RGNL (VLD)

WAAS CH 87101 W17A	APP CRS 173°	Rwy Idg TDZE Apt Elev	8002 198 203
--	------------------------	-----------------------------	---

▽ DME/DME RNP-0.3 NA. VDP and Baro-VNAV NA when using Moultrie altimeter setting.
▲ If local altimeter setting not received, use Moultrie altimeter setting and increase all DAs/MDAs 100 feet. For uncompensated Baro-VNAV systems, LNAV/VNAV NA below -15°C (5°F) or above 48°C (119°F). Visibility reduction by helicopters NA. Circling to Rwy 31 NA at night.

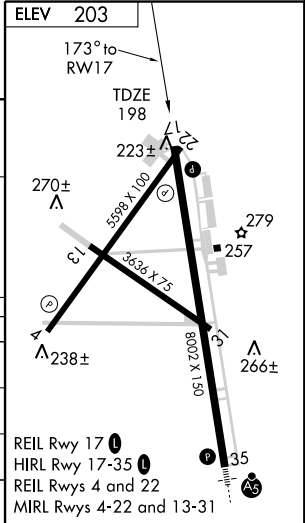
MISSED APPROACH:
 Climb to 2700 direct YUPUY and via 174° track to HADDE and hold.

ASOS 126.225	VALDOSTA APP CON * 126.6 285.6	VALDOSTA TOWER * 120.9 (CTAF) 0	GND CON 121.7	UNICOM 122.95
------------------------	--	---	-------------------------	-------------------------



CUVGA	ZURAR	YUPUY	HADDE
2700	1800	2700	174° TRK
Procedure Turn NA		*1.7 NM to RW17	*LNAV Only
GS 3.00°			
TCH 50			

CATEGORY	A	B	C	D
LPV DA	482-1 284 (300-1)			
LNAV/ VNAV DA	622-1½ 424 (500-1½)			
LNAV MDA	780-1 582 (600-1)	780-1½ 582 (600-1½)	780-1¾ 582 (600-1¾)	780-2 577 (600-2)
CIRCLING	780-1½ 577 (600-1½)			780-2 577 (600-2)



SE-4, 22 OCT 2009 to 19 NOV 2009

SE-4, 22 OCT 2009 to 19 NOV 2009