

RNAV (GPS) RWY 32

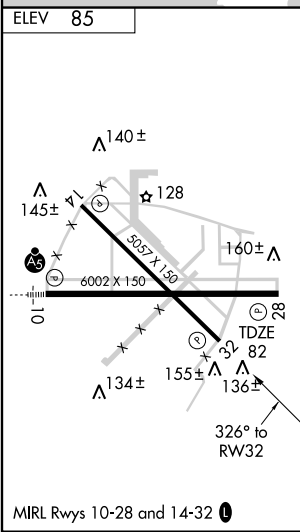
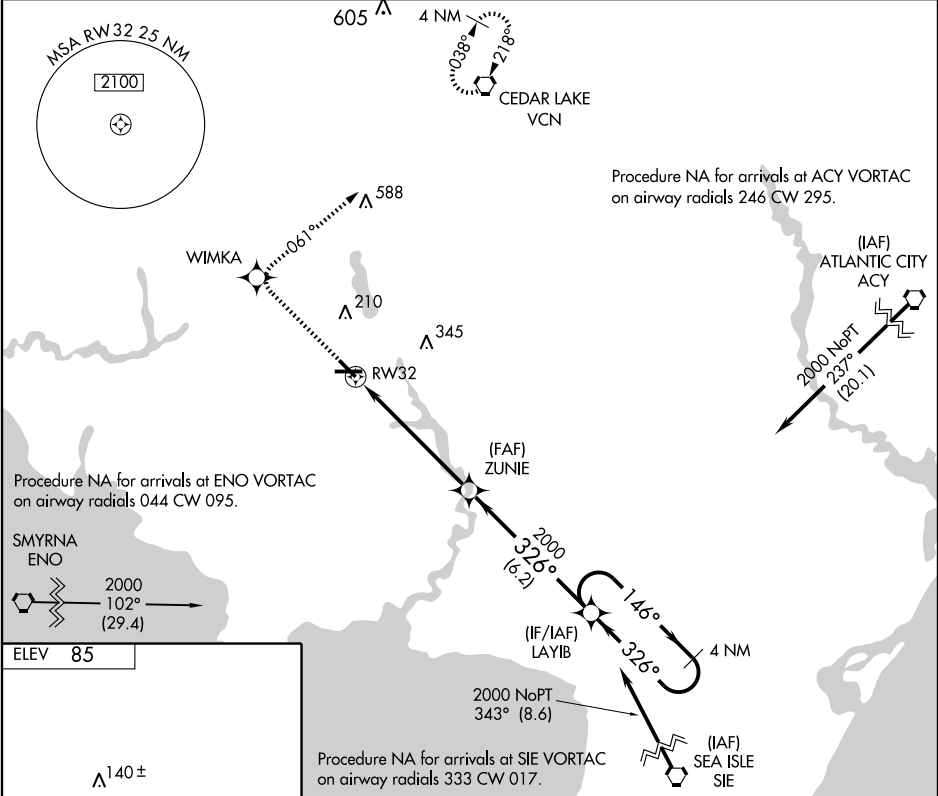
MILLVILLE MUNI (MIV)

WAAS Ch 86900 W32A	APP CRS 326°	Rwy Idg TDZE Apt Elev	5057 82 85
--	------------------------	-----------------------------	---------------------------------------

Procedure NA at night. DME/DME RNP-0.3 NA.
For uncompensated Baro-VNAV systems, LNAV/VNAV
NA below -1.5°C (5°F) or above 49°C (120°F).

MISSED APPROACH: Climb to 2000 direct WIMKA
and right turn via 061° track to VCN VORTAC and hold.

ASOS 128.125	ATLANTIC CITY APP CON 124.6 327.125	MILLVILLE RADIO 123.65	UNICOM 123.0	CTAF 123.65
------------------------	---	----------------------------------	------------------------	-----------------------



2000 WIMKA	VCN	ZUNIE	LAYIB	4 NM Holding Pattern
\uparrow	\curvearrowright track 061°			
RW32		146° \rightarrow 2000		
326°		326° \leftarrow 2000		GS 3.00° TCH 60
VSGI and RNAV glidepath not coincident.				
5.7 NM		6.2 NM		
CATEGORY	A	B	C	D
LPV DA		381-1	299 (300-1)	
LNAV/VNAV DA		415-1	333 (400-1)	
LNAV MDA		420-1	338 (400-1)	
CIRCLING	480-1 395 (400-1)	540-1 455 (500-1)	560-1½ 475 (500-1½)	640-2 555 (600-2)

NE-2, 22 OCT 2009 to 19 NOV 2009

NE-2, 22 OCT 2009 to 19 NOV 2009