

RNAV (GPS) RWY 14

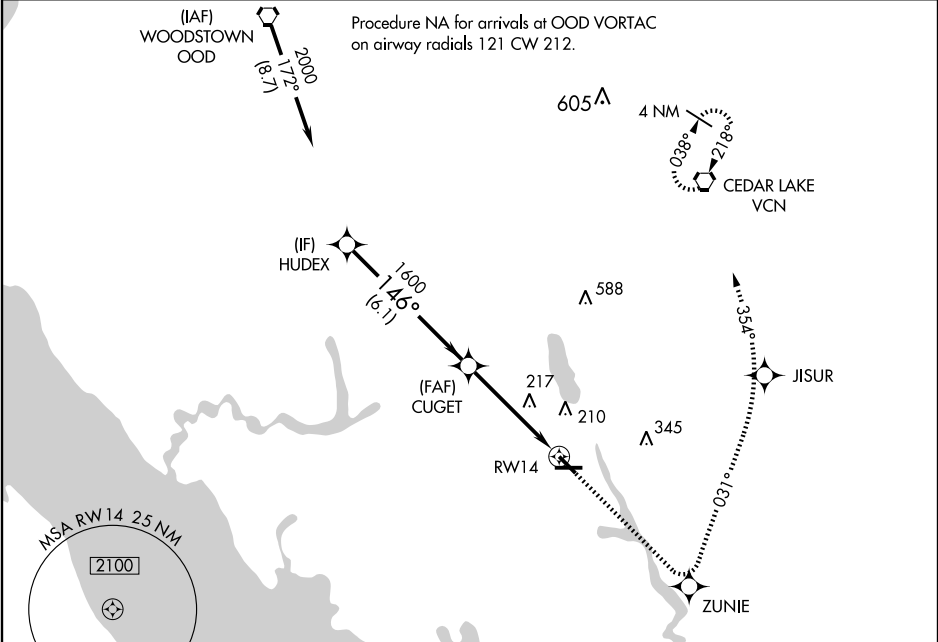
MILLVILLE MUNI (MIV)

WAAS Ch 82000 W14A	APP CRS 146°	Rwy Idg TDZE Apt Elev	5057 81 85
--	------------------------	-----------------------------	---------------------------------------

▼ When VGSI inop, straight-in/circling Rwy 14 procedure NA at night. DME/DME RNP-0.3 NA. For uncompensated Baro-VNAV systems, LNAV/VNAV NA below -15°C (5°F) or above 48°C (119°F).

MISSED APPROACH: Climb to 2000 direct ZUNIE and left turn via 031° track to JISUR and left turn 354° track to VCN VORTAC and hold.

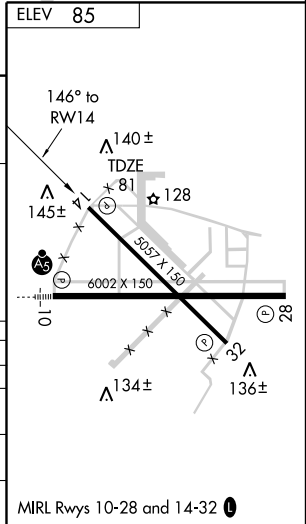
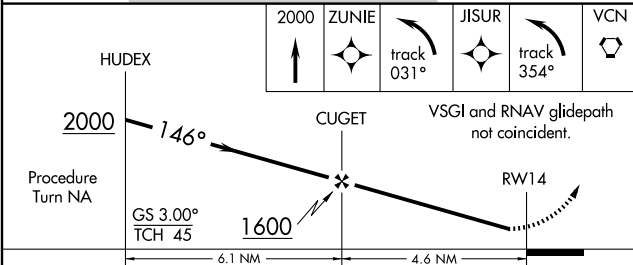
ASOS 128.125	ATLANTIC CITY APP CON 124.6 327.125	MILLVILLE RADIO 123.65	UNICOM 123.0	CTAF 123.65
------------------------	---	----------------------------------	------------------------	-----------------------



NE-2, 22 OCT 2009 to 19 NOV 2009

NE-2, 22 OCT 2009 to 19 NOV 2009

ELEV	85
------	----



CATEGORY	A	B	C	D
LPV DA	377-1 296 (300-1)			
LNAV/VNAV DA	550-1¾ 469 (500-1¾)			
LNAV MDA	480-1 399 (400-1)		480-1¼ 399 (400-1¼)	
CIRCLING	560-1 475 (500-1)	560-1½ 475 (500-1½)	640-2 555 (600-2)	