

NDB RWY 14

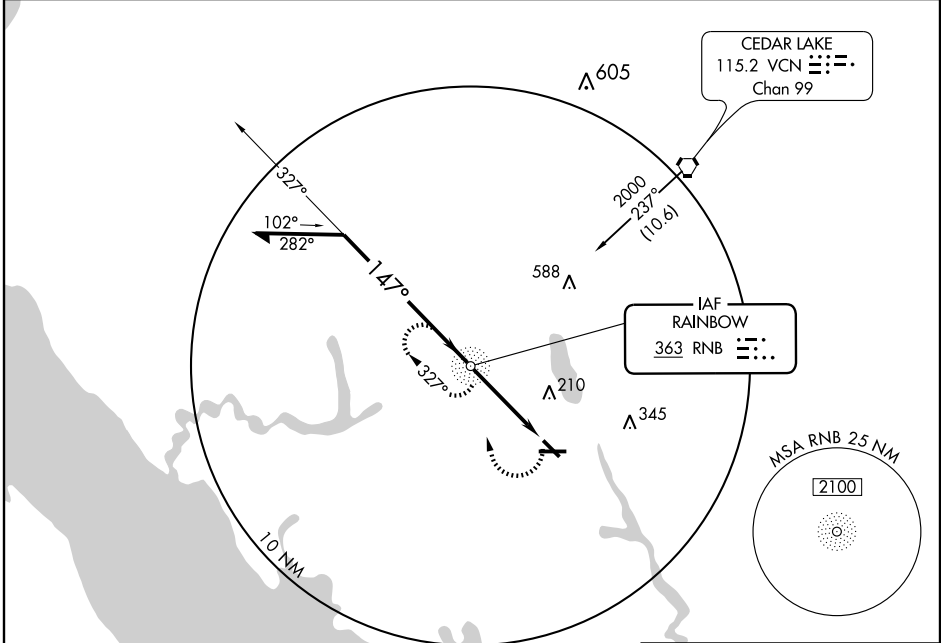
MILLVILLE MUNI (MIV)

NDB RNB 363	APP CRS 147°	Rwy Idg TDZE Apt Elev	5057 81 85
-----------------------	------------------------	-----------------------------	---------------------------------------

▼ When VGSI inop, straight-in/circling Rwy 14 procedure NA at night.

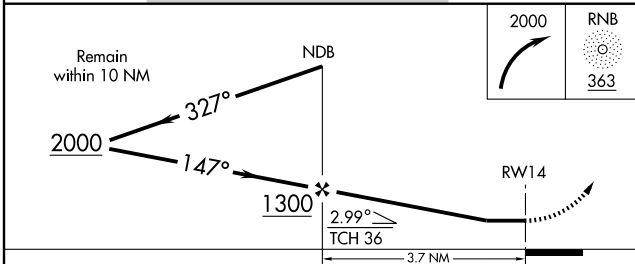
MISSED APPROACH: Climbing right turn to 2000 direct RNB NDB and hold, continue climb-in-hold to 2000.

ASOS 128.125	ATLANTIC CITY APP CON 124.6 327.125	MILLVILLE RADIO 123.65	UNICOM 123.0	CTAF 123.65
------------------------	-----------------------------------------------	----------------------------------	------------------------	-----------------------

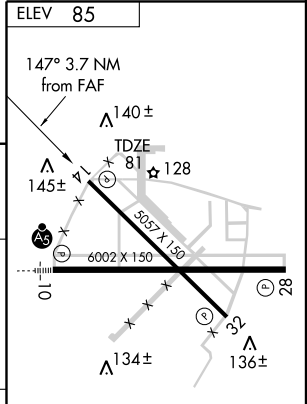


NE-2, 22 OCT 2009 to 19 NOV 2009

NE-2, 22 OCT 2009 to 19 NOV 2009



CATEGORY	A	B	C	D
S-14	560-1 479 (500-1)		560-1½ 479 (500-1½)	560-1½ 479 (500-1½)
CIRCLING	560-1 475 (500-1)		560-1½ 475 (500-1½)	640-2 555 (600-2)



MIRL Rwy 10-28 and 14-32					
FAF to MAP 3.7 NM					
Knots	60	90	120	150	180
Min:Sec	3:42	2:28	1:51	1:29	1:14