

ILS RWY 10

MILLVILLE MUNI (MIV)

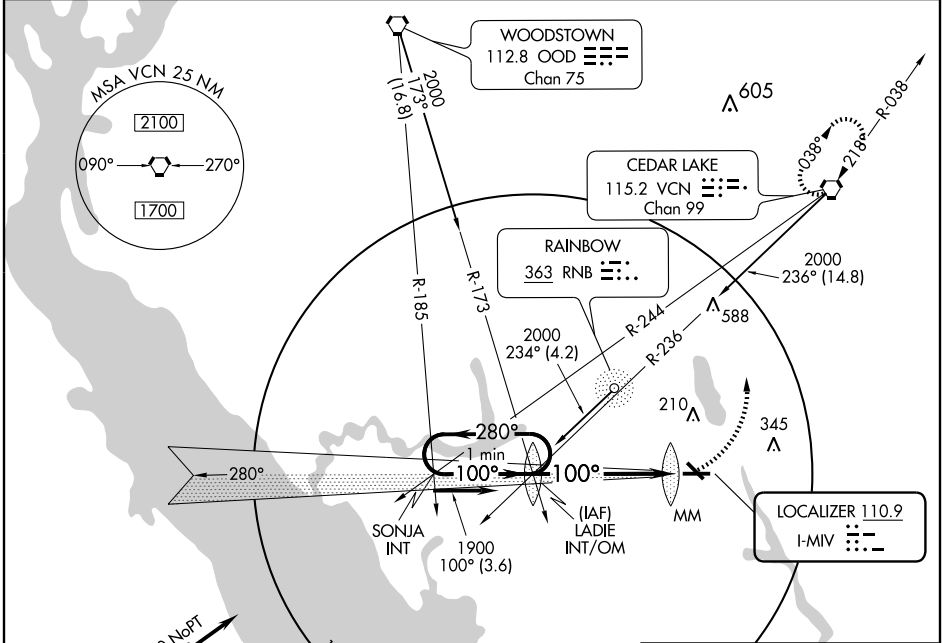
LOC I-MV 110.9	APP CRS 100°	Rwy Idg TDZE Apt Elev	6002 74 83
--------------------------	------------------------	-----------------------------	---------------------------------------

⚠ Cat. D S-LOC 10 visibility increased ¼ mile for inoperative MM.
ACTIVATE MALSR Rwy 10-UNICOM.



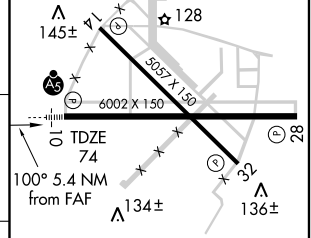
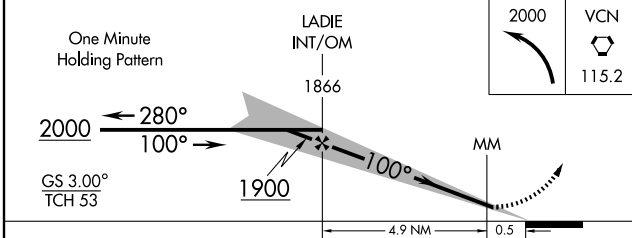
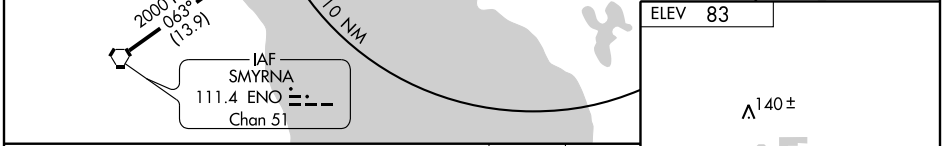
MISSED APPROACH: Climbing left turn to 2000 direct VCN VORTAC and hold.

ASOS 128.125	ATLANTIC CITY APP CON 124.6 327.125	MILLVILLE RADIO 123.65	UNICOM 123.0	CTAF 123.65
------------------------	---	----------------------------------	------------------------	-----------------------



NE-2, 22 OCT 2009 to 19 NOV 2009

NE-2, 22 OCT 2009 to 19 NOV 2009



CATEGORY	A	B	C	D
S-ILS 10		274-½	200 (200-½)	
S-LOC 10		420-½	346 (400-½)	420-¾ 346 (400-¾)
CIRCLING	480-1 397 (400-1)	540-1 457 (500-1)	540-1½ 457 (500-1½)	640-2 557 (600-2)

MIRL Rwy 10-28 and 14-32
FAF to MAP 5.4 NM

Knots	60	90	120	150	180
Min:Sec	5:24	3:36	2:42	2:10	1:48