

WILKES BARRE THREE ARRIVAL (LVZ.LVZ3)

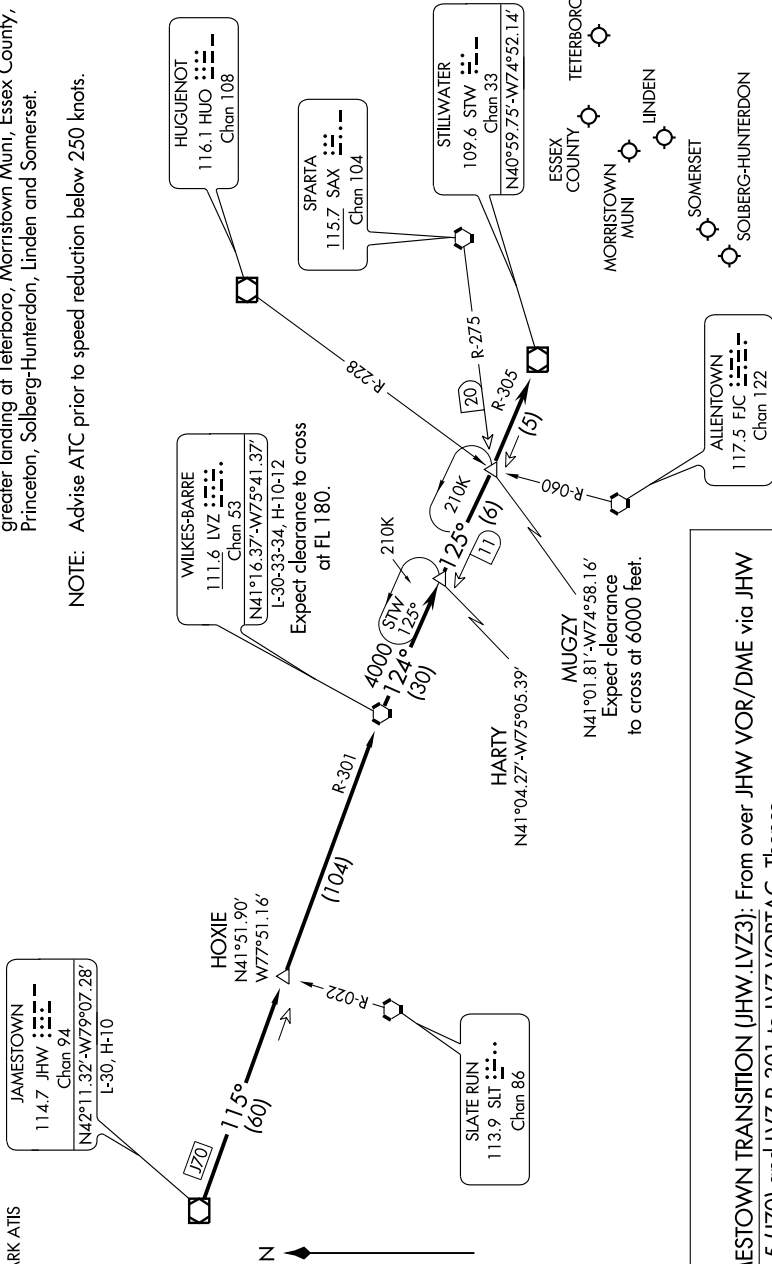
TETERBORO, NEW JERSEY

NE-2, 22 OCT 2009 to 19 NOV 2009

NEW YORK APP CON
127.6379.9
NEWARK ATIS
115.7

NOTE: This STAR applicable to all aircraft capable of 250 knots IAS or greater landing at Teterboro, Morristown Muni, Essex County, Princeton, Solberg-Hunterdon, Linden and Somerset.

NOTE: Advise ATC prior to speed reduction below 250 knots.



JAMESTOWN TRANSITION (JHW.LVZ3): From over JHW VOR/DME via JHW R-115 (J70) and LVZ R-301 to LVZ VORTAC. Thence....

....From over LVZ VORTAC, via LVZ R-124 and STW R-305 to STW VOR/DME.

Expect radar vectors to final approach course.

NOTE: Chart not to scale.

NE-2, 22 OCT 2009 to 19 NOV 2009

WILKES BARRE THREE ARRIVAL (LVZ.LVZ3)

TETERBORO, NEW JERSEY