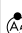


WAAS CH 65707 W06A	APP CRS 060°	Rwy Idg TDZE Apt Elev	6013 6 9
--	------------------------	-----------------------------	-------------------------------------

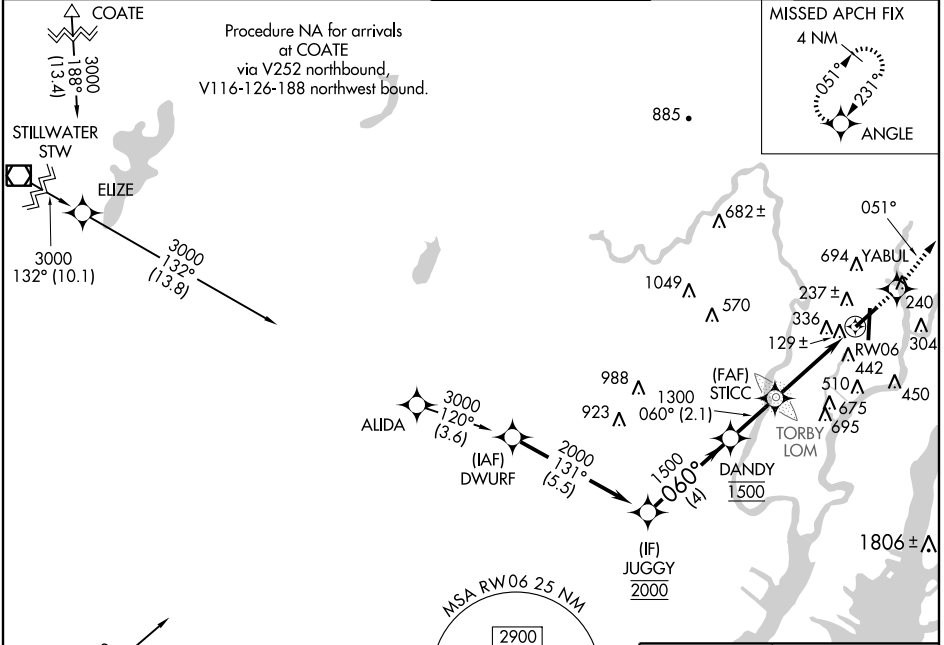
RNAV (GPS) Y RWY 6

TETERBORO (TEB)

⚠ For inoperative MALSR, increase LPV all Cats visibility to RVR 6000 and increase LNAV Cat A visibility to RVR 5000. Circling NA for Cats B, C and D northwest of Rwy 6-19. DME/DME RNP-0.3 NA. Visibility reduction by helicopters NA.

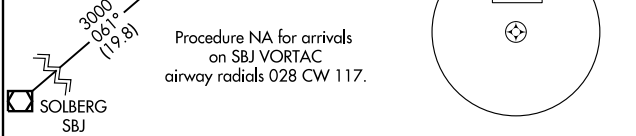
MALSR  MISSED APPROACH: Climb to 2000 direct YABUL and via track 051° to ANGLE and hold.

ATIS 132.025 114.2	NEW YORK APP CON 127.6 379.9	TETERBORO TOWER 119.5	GND CON 121.9	CLNC DEL 128.05
------------------------------	--	---------------------------------	-------------------------	---------------------------

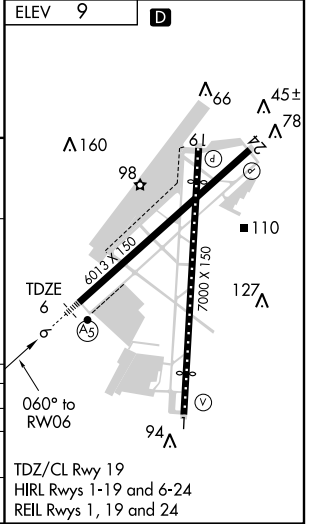


NE-2, 22 OCT 2009 to 19 NOV 2009

NE-2, 22 OCT 2009 to 19 NOV 2009



Procedure Turn NA	JUGGY	DANDY	STICC	YABUL	ANGLE
2000	060°	1500	1300	2000	051°
GS 3.00° TCH 53	4 NM	2.1 NM	1.6 NM	2.3 NM	
	*LNAV only.				



CATEGORY	A	B	C	D
LPV DA	369/40 363 (400-¾)			
LNAV MDA	800/40	794 (800-¾)	800-1¼ 794 (800-1¾)	800-2 794 (800-2)
CIRCLING	800-1 791 (800-1)	800-1¼ 791 (800-1¼)	800-2¼ 791 (800-2¼)	820-2¾ 811 (900-2¾)