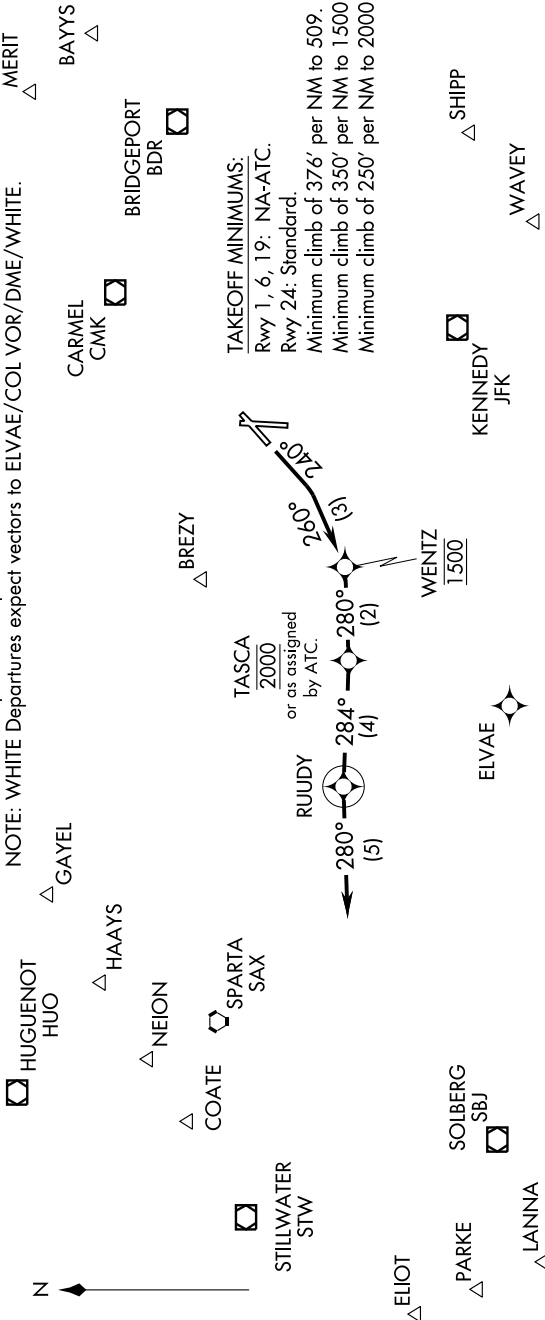


# RUUDY TWO DEPARTURE (RNAV)

NE-2, 22 OCT 2009 to 19 NOV 2009

ATIS 132.025 114.2  
 TETERBORO CLNC DEL 128.05  
 TETERBORO GND CON 121.9  
 TETERBORO TOWER 119.5  
 NEW YORK DEP CON 126.7 379.9

NOTE: BAYGS Departures expect vectors to BDR VOR/DME/BAYGS.  
 NOTE: BIGGY Departures expect vectors to SBJ VOR/DME/BIGGY.  
 NOTE: COATE Departures expect vectors to SAX VORTAC/COATE.  
 NOTE: DIXIE Departures expect vectors to ELVAE/COL VOR/DME/DIXIE.  
 NOTE: HAAYS Departures expect vectors to HUO VOR/DME/HAAYS.  
 NOTE: WHITE Departures expect vectors to ELVAE/COL VOR/DME/WHITE.



TAKEOFF MINIMUMS:  
 Rwy 1, 6, 19: NA-ATC.  
 Rwy 24: Standard.  
 Minimum climb of 376' per NM to 509.  
 Minimum climb of 350' per NM to 1500.  
 Minimum climb of 250' per NM to 2000.

## DEPARTURE ROUTE DESCRIPTION

TAKEOFF RWY 24: Climb heading 240° to intercept 260° course to WENTZ, cross WENTZ at 1500, then via 280° track to TASCA, cross TASCA at 2000 or as assigned by ATC, then via track 284° to RUUDY, then via heading 280°, thence . . . . .  
 . . . . . Expect vectors to assigned route/fix. Expect clearance to filed altitude/flight level ten minutes after departure.

NOTE: DME/DME/IRU or GPS Required.  
 NOTE: RADAR Required.  
 NOTE: RNAV 1.  
 TAKEOFF OBSTACLES:  
 Rwy 24: Sign and Trees beginning 3347' from DER, 535' right of centerline, up to 125' AGL/134' MSL.

Note: Chart not to scale.

# RUUDY TWO DEPARTURE (RNAV)

NE-2, 22 OCT 2009 to 19 NOV 2009