

RNAV (RNP) RWY 19

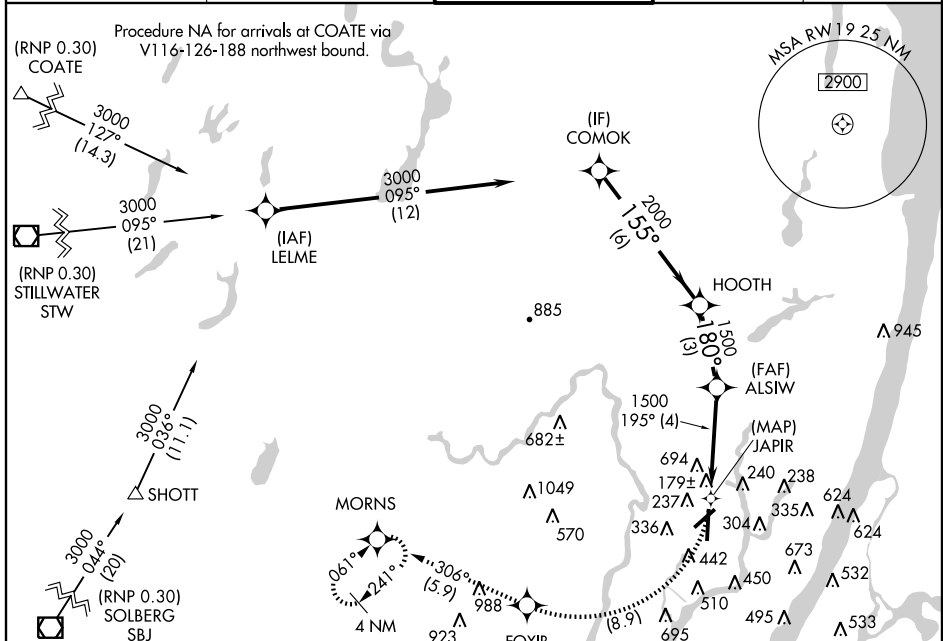
TETERBORO (TEB)

APP CRS	Rwy Idg	6230
195°	TDZE	7
	Apt Elev	9

▼ Missed Approach requires RNP less than 1.0. RF and GPS Required.
For uncompensated Baro-VNAV systems, procedure NA below -13°C (8°F) or above 48°C (119°F). Visibility reduction by helicopters NA.

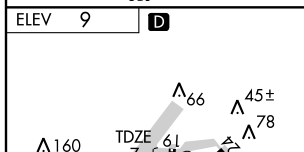
MISSED APPROACH: Climb to 1500 via right turn to FOXIB, then climb to 3000 via track 306° to MORNIS and hold.

ATIS 132.025 114.2	NEW YORK APP CON 127.6 379.9	TETERBORO TOWER 119.5	GND CON 121.9	CLNC DEL 128.05
------------------------------	--	---------------------------------	-------------------------	---------------------------

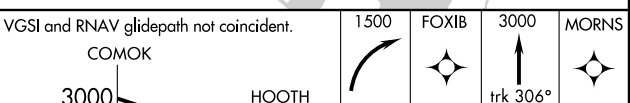


NE-2, 22 OCT 2009 to 19 NOV 2009

NE-2, 22 OCT 2009 to 19 NOV 2009



Procedure NA for arrivals at SBJ VOR/DME on airway radials 028 CW 54.



Procedure Turn NA	GP 3.00°	TCH 54	6 NM	3 NM	4 NM	0.5
CATEGORY	A	B	C	D		
RNP 0.10 DA	500-1¾ 493 (500-1¾)					

TDZ/CL Rwy 19
REIL Rwy 1, 19 and 24
HIRL Rwy 1-19 and 6-24

SPECIAL AIRCRAFT & AIRCREW AUTHORIZATION REQUIRED