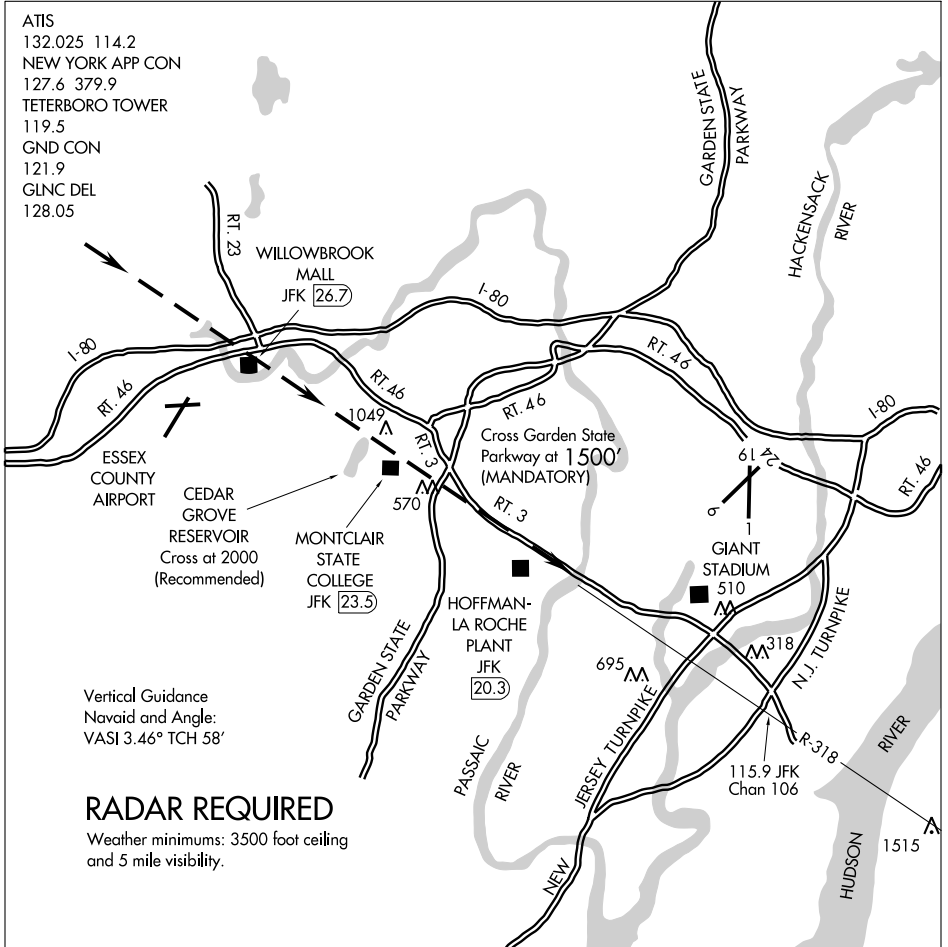


PASSAIC RIVER VISUAL RWY 6

TETERBORO (TEB)
TETERBORO, NEW JERSEY

ATIS
 132.025 114.2
 NEW YORK APP CON
 127.6 379.9
 TETERBORO TOWER
 119.5
 GND CON
 121.9
 GLNC DEL
 128.05



Vertical Guidance
 Navaid and Angle:
 VASI 3.46° TCH 58'

RADAR REQUIRED

Weather minimums: 3500 foot ceiling and 5 mile visibility.

1 NM	2	3	4	5	6	7	8	9	10	11	12	13	14	15	16
------	---	---	---	---	---	---	---	---	----	----	----	----	----	----	----

When cleared for a Passaic River Visual to Rwy 6, descend after the Willowbrook Mall so as to cross the Cedar Grove Reservoir at 2000' (recommended), and the Garden State Parkway at 1500' (mandatory). Follow Rt. 3 until the Passaic River, then commence a turn and descent for Rwy 6. Use caution for antenna farms northeast of Cedar Grove Reservoir.

PASSAIC RIVER VISUAL RWY 6

TETERBORO, NEW JERSEY
TETERBORO (TEB)

NE-2, 22 OCT 2009 to 19 NOV 2009

NE-2, 22 OCT 2009 to 19 NOV 2009