

# JAIKE TWO ARRIVAL (RNAV)

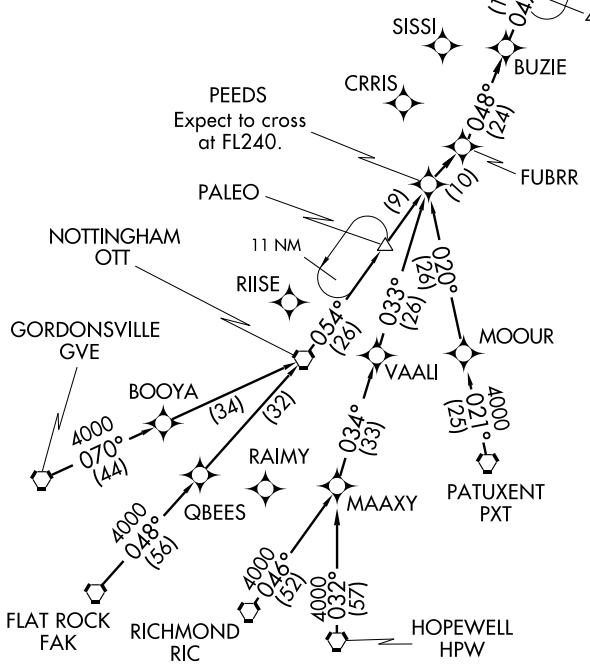
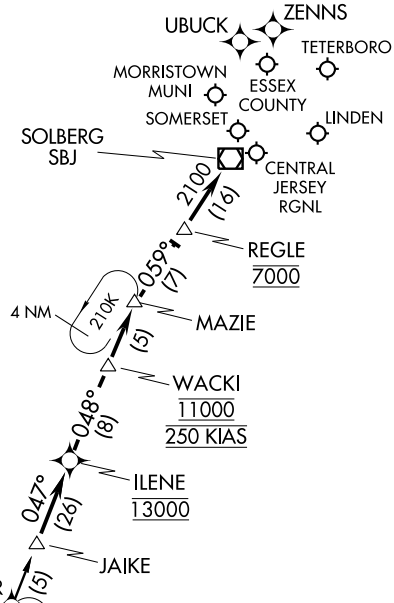
TETERBORO, NEW JERSEY

NEW YORK APP CON  
 132.8 379.9  
 TETERBORO ARR ATIS  
 108.4  
 MORRISTOWN ARR ATIS  
 124.25  
 ESSEX COUNTY ARR ATIS  
 135.5  
 WASHINGTON CENTER  
 132.52

## ARRIVAL ROUTE DESCRIPTION

- FLAT ROCK TRANSITION (FAK.JAIKE2)
- GORDONSVILLE TRANSITION (GVE.JAIKE2)
- HOPEWELL TRANSITION (HPW.JAIKE2)
- PATUXENT TRANSITION (PXT.JAIKE2)
- RICHMOND TRANSITION (RIC.JAIKE2)

From JAIKE WP via 047° track to ILENE WP,  
 then via 048° track to MAZIE WP,  
 then via 059° track to SBJ VOR/DME.  
 Expect radar vectors.



- NOTE: RNAV 1.
- NOTE: RADAR REQUIRED.
- NOTE: STAR applicable to Turbojet Aircraft only.
- NOTE: DME/DME/IRU or GPS required.
- NOTE: RIC/HPW/PXT Transitions as assigned by ATC only.
- NOTE: Advise ATC prior to speed reduction below 250 KIAS.

NOTE: Chart not to scale.

# JAIKE TWO ARRIVAL (RNAV)

TETERBORO, NEW JERSEY

NE-2, 22 OCT 2009 to 19 NOV 2009

NE-2, 22 OCT 2009 to 19 NOV 2009