

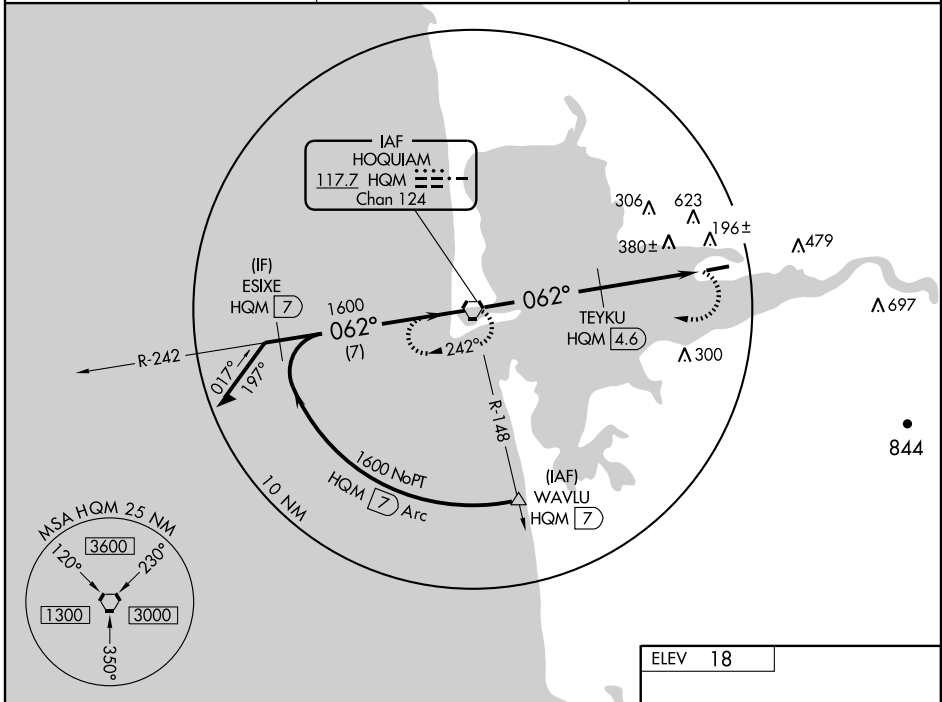
VORTAC HQM 117.7 Chan 124	APP CRS 062°	Rwy Idg TDZE Apt Elev	5000 18 18
---	------------------------	-----------------------------	---------------------------------------

VOR RWY 6
HOQUIAM/ BOWERMAN (HQM)

▽ Visibility reduction by helicopters NA.
▲ Circling NA northwest of Rwy 6 and 24.

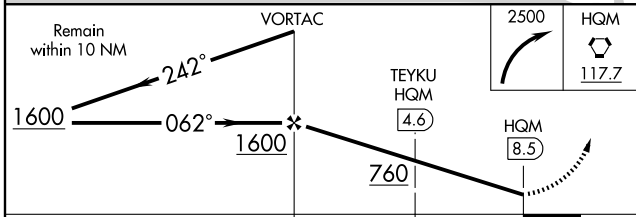
MISSED APPROACH: Climbing right turn to 2500 direct HQM VORTAC and hold.

ASOS 135.775	SEATTLE CENTER 128.3 269.0	UNICOM 122.7 (CTAF) 0
------------------------	--------------------------------------	---------------------------------



NW-1, 22 OCT 2009 to 19 NOV 2009

NW-1, 22 OCT 2009 to 19 NOV 2009



ELEV 18

TDZE 18

69

50 ±

5000 X 150

24°

062° 8.5 NM from FAF

REIL Rwy 6 0

HIRL Rwy 6-24 0

FAF to MAP 8.5 NM

Knots	60	90	120	150	180
Min:Sec	8:30	5:40	4:15	3:24	2:50

CATEGORY	A	B	C	D
S-6	760-1 742 (800-1)	760-1 ¼ 742 (800-1 ¼)	760-2 ¼ 742 (800-2 ¼)	760-2 ½ 742 (800-2 ½)
CIRCLING	760-1 742 (800-1)	760-1 ¼ 742 (800-1 ¼)	760-2 ¼ 742 (800-2 ¼)	760-2 ½ 742 (800-2 ½)
TEYKU FIX MINIMUMS				
S-6	640-1 622 (700-1)	640-1 ¾ 622 (700-1 ¾)	640-2 622 (700-2)	640-2 622 (700-2)
CIRCLING	640-1 622 (700-1)	640-1 ¾ 622 (700-1 ¾)	640-2 622 (700-2)	640-2 622 (700-2)