

WAAS CH <b>82015</b> <b>W06A</b>	APP CRS <b>061°</b>	Rwy Idg TDZE <b>18</b> Apt Elev <b>18</b>	<b>5000</b>
--	------------------------	---	-------------

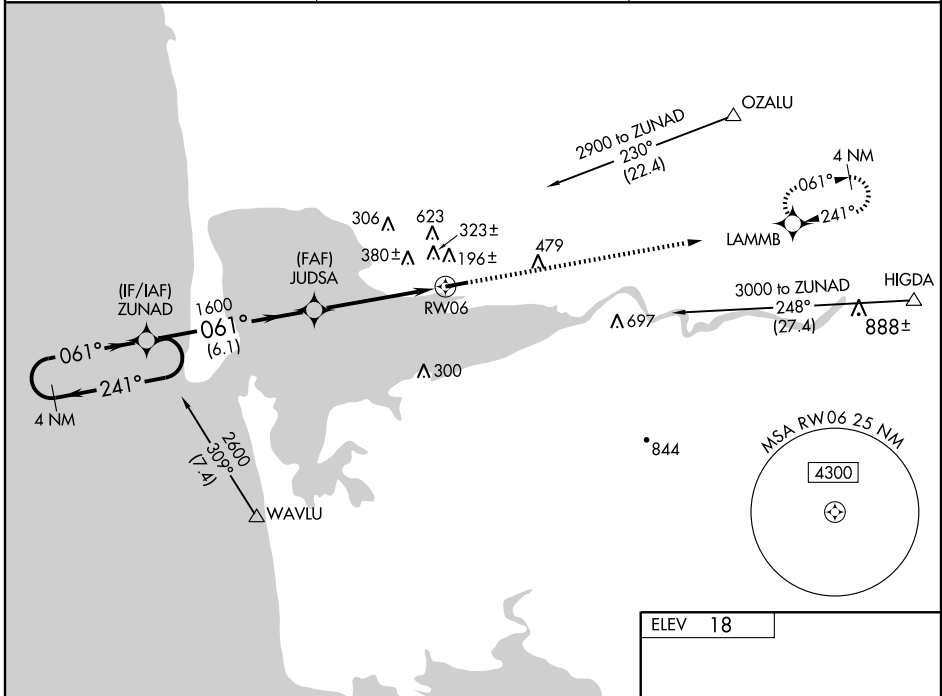
# RNAV (GPS) RWY 6

HOQUIAM/BOWERMAN (HQM)

**∇** Circling NA northwest of Rwy 6-24.  
For uncompensated Baro-VNAV systems, LNAV/VNAV NA below -15°C (5°F) or above 48°C (118°F).  
DME/DME RNP-0.3 NA. Visibility reduction by helicopters NA.  
When local altimeter setting not received, procedure NA.

MISSED APPROACH: Climb to 2900 direct LAMMB and hold.

ASOS <b>135.775</b>	SEATTLE CENTER <b>128.3 269.0</b>	UNICOM <b>122.7 (CTAF) 0</b>
------------------------	--------------------------------------	---------------------------------



NW-1, 22 OCT 2009 to 19 NOV 2009

NW-1, 22 OCT 2009 to 19 NOV 2009

